

## 30-2712: Anti-Hu TCR Vgamma9 PE

<b>Clonality :</b>	Monoclonal
<b>Clone Name :</b>	B3
<b>Application :</b>	FACS
<b>Reactivity :</b>	Human
<b>Conjugate :</b>	PE
<b>Alternative Name :</b>	TCRVG9
<b>Immunogen Information :</b>	human T cells

### Description

TCR Vgamma9 is a variant of TCR gamma chain, that is present on a subset of human gamma/delta T cells. TCR Vgamma9/Vdelta2 T cells are able to recognize and kill various tumor cells, as this receptor heterodimer binds to certain phosphoantigens, expressed by tumors.

Specificity :The mouse monoclonal antibody B3 recognizes an extracellular epitope of human TCR Vgamma9, a variant of TCR gamma chain, which is expressed on a gamma/delta T cell subpopulation with cytolytic activity against various tumor cells.

### Product Info

<b>Amount :</b>	100 Tests
<b>Purification :</b>	Purified antibody is conjugated with R-phycoerythrin (PE) under optimum conditions. Unconjugated antibody and free fluorochrome are removed by size-exclusion chromatography.
<b>Content :</b>	Concentration: 1 mg/ml Storage Buffer: Phosphate buffered saline (PBS), pH 7.4, 15 mM sodium azide
<b>Storage condition :</b>	Store at 2-8°C. Protect from prolonged exposure to light. Do not freeze.

### Application Note

Flow cytometry: The reagent is designed for analysis of human blood cells using 10  $\mu$ l reagent / 100  $\mu$ l of whole blood or  $10^6$  cells in a suspension. The content of a vial (1 ml) is sufficient for 100 tests.

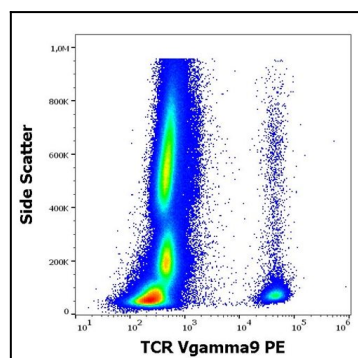


Figure 1: Flow cytometry surface staining pattern of human peripheral whole blood stained using anti-human TCR Vgamma9 (B3) PE antibody

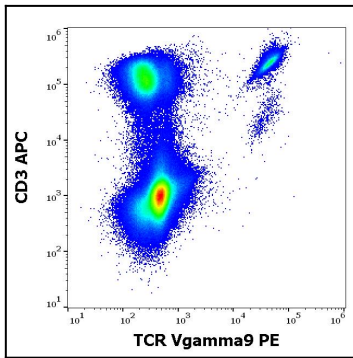


Figure 2: Flow cytometry multicolor surface staining of human lymphocytes stained using anti-human TCR Vgamma9 (B3) PE antibody and anti-human CD3 (UCHT1) APC antibody