

## 30-2708: Anti-Hu TROP2 Biotin

<b>Clonality :</b>	Monoclonal
<b>Clone Name :</b>	TrMab-6
<b>Application :</b>	WB
<b>Reactivity :</b>	Pig
<b>Conjugate :</b>	Biotin
<b>Gene :</b>	TACSTD2
<b>Gene ID :</b>	4070
<b>Uniprot ID :</b>	P09758
<b>Alternative Name :</b>	tumor associated calcium signal transducer 2 TACSTD2, EGP1, GP50, M1S1, GA733-1
<b>Immunogen Information :</b>	TROP2-transfected CHO cells

### Description

TROP2 is a cell surface receptor that transduces calcium signals. It belongs to carcinoma-associated antigens. Mutations of TROP2 have been associated with gelatinous drop-like corneal dystrophy.

Specificity :The mouse monoclonal antibody TrMab-6 recognizes an extracellular epitope of TROP2, a type I transmembrane glycoprotein. This antibody is useful for detection of TROP2 in breast cancer.

### Product Info

<b>Amount :</b>	0.1 mg
<b>Purification :</b>	Purified antibody is conjugated with biotin LC-NHS ester under optimum conditions and unconjugated antibody and free biotin are removed by size-exclusion chromatography.
<b>Content :</b>	Concentration: 1 mg/ml Storage Buffer: Phosphate buffered saline (PBS), pH 7.4, 15 mM sodium azide
<b>Storage condition :</b>	Store at 2-8°C. Do not freeze.

### Application Note

Flow cytometry: Recommended dilution: 1-4  $\mu$ g/ml.

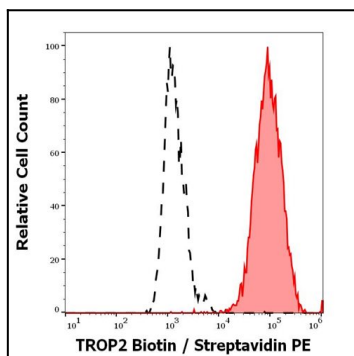


Figure 1: Separation of MCF-7 cells stained using anti-TROP2 (TrMab-6) Biotin antibody from MCF-7 cells unstained by primary antibody in flow cytometry analysis