

## 30-2706: Anti-Hu TROP2 Purified

<b>Clonality :</b>	Monoclonal
<b>Clone Name :</b>	TrMab-6
<b>Application :</b>	WB
<b>Reactivity :</b>	Pig
<b>Gene :</b>	TACSTD2
<b>Gene ID :</b>	4070
<b>Uniprot ID :</b>	P09758
<b>Format :</b>	Purified
<b>Alternative Name :</b>	tumor associated calcium signal transducer 2 TACSTD2, EGP1, GP50, M1S1, GA733-1
<b>Immunogen Information :</b>	TROP2-transfected CHO cells

### Description

TROP2 is a cell surface receptor that transduces calcium signals. It belongs to carcinoma-associated antigens. Mutations of TROP2 have been associated with gelatinous drop-like corneal dystrophy.

Specificity :The mouse monoclonal antibody TrMab-6 recognizes an extracellular epitope of TROP2, a type I transmembrane glycoprotein. This antibody is useful for detection of TROP2 in breast cancer.

### Product Info

<b>Amount :</b>	0.1 mg
<b>Purification :</b>	Purified by protein-A affinity chromatography.
<b>Content :</b>	Storage Buffer: Stabilizing phosphate buffered saline (PBS), pH 7.4, 15 mM sodium azide
<b>Storage condition :</b>	Store at 2-8°C. Do not freeze.

### Application Note

Flow cytometry: Recommended dilution: 1-4  $\mu\text{g/ml}$ .

Western blotting: Recommended dilution: 1  $\mu\text{g/ml}$ .

Immunocytochemistry: Recommended dilution: 10  $\mu\text{g/ml}$ ; the cells can be fixed with 4% PFA and permeabilized with 0.1% Triton X-100 before antibody staining, when needed.

Immunohistochemistry (paraffin sections): Recommended dilution: 10  $\mu\text{g/ml}$ . Heat-mediated antigen retrieval in citrate buffer, pH = 6.

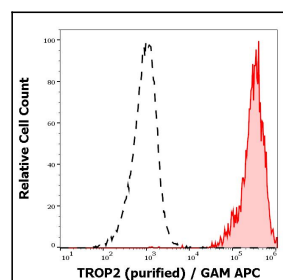


Figure 1: Separation of A431 cells (red-filled) from human peripheral whole blood cells (black-dashed) in flow cytometry analysis (surface staining) stained using anti-human TROP-2 (TrMab-6) purified antibody

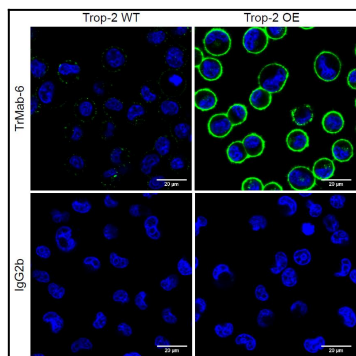


Figure 2: Immunocytochemistry staining of TROP2 on the surface of unfixed wild-type and TROP2-overexpressing MDA-MB-231 cells using mouse monoclonal antibody TrMab-6 (1  $\mu\text{g}/\text{ml}$ ), detected with GAM IgG-Alexa Fluor®488 (diluted 1:1000, green); isotype control IgG2b was used as the negative control. DNA stained with DAPI (blue)

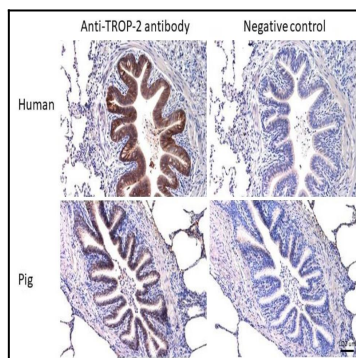


Figure 3: Immunohistochemistry staining (paraffin sections) of TROP2 in human and porcine lung tissue using mouse monoclonal antibody TrMab-6 (diluted 1:100), detected with En Vision FLEX/HRP. Positive in basolateral parts of airway epithelium. Negative control was stained without primary antibody- Scale bar represents 100  $\mu\text{m}$ .