

## 36-1741: Monoclonal Antibody to TTF-1 / NKX2.1 (Thyroid & Lung Epithelial Marker)(Clone : NX2.1/690)

<b>Clonality :</b>	Monoclonal
<b>Clone Name :</b>	NX2.1/690
<b>Application :</b>	IHC,FACS,IF
<b>Reactivity :</b>	Human
<b>Gene :</b>	NKX2-1
<b>Gene ID :</b>	7080
<b>Uniprot ID :</b>	P43699
<b>Format :</b>	Purified
<b>Alternative Name :</b>	NKX2-1,NKX2A,TITF1,TTF1
<b>Isotype :</b>	Mouse IgG1, kappa
<b>Immunogen Information :</b>	Recombinant TTF-1 protein

### Description

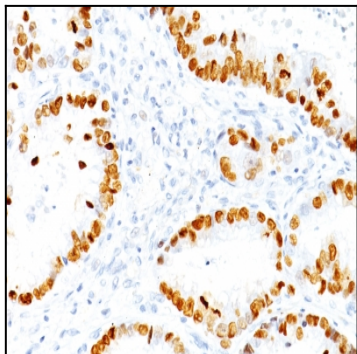
Recognizes a protein of 40kDa, identified as Thyroid transcription factor-1 (TTF-1). TTF-1 is a member of the NKx2 family of homeodomain transcription factors. It is expressed in epithelial cells of the thyroid gland and the lung. Nuclei from liver, stomach, pancreas, small intestine, colon, kidney, breast, skin, testes, pituitary, prostate, and adrenal glands are unreactive. Anti-TTF-1 is useful in differentiating primary adenocarcinoma of the lung from metastatic carcinomas originating in the breast, mediastinal germ cell tumors, and malignant mesothelioma. It can also be used to differentiate small cell lung carcinoma from lymphoid infiltrates. Loss of TTF-1 expression in non-small cell lung carcinoma has been associated with aggressive behavior of such neoplasms. TTF-1 reactivity is also seen in thyroid malignancies.

### Product Info

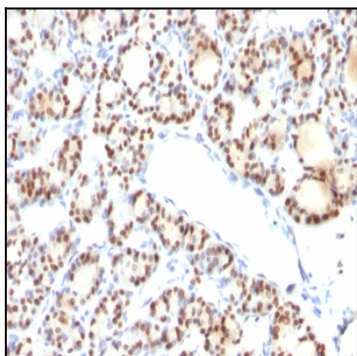
<b>Amount :</b>	100 µg
<b>Purification :</b>	Affinity Chromatography
<b>Content :</b>	100 µg in 500 µl PBS containing 0.05% BSA and 0.05% sodium azide. Sodium azide is highly toxic.
<b>Storage condition :</b>	Store the antibody at 4°C; stable for 6 months. For long-term storage; store at -20°C. Avoid repeated freeze and thaw cycles.

### Application Note

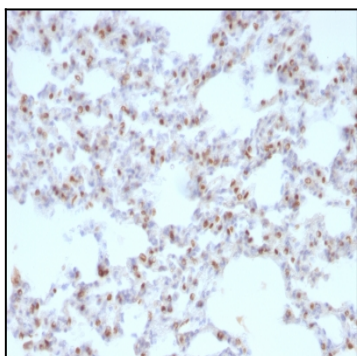
Flow Cytometry (1-2ug/million cells); Immunofluorescence (1-2ug/ml); Immunohistochemistry (Formalin-fixed) (1-2ug/ml for 30 minutes at RT)(Staining of formalin-fixed tissues requires heating tissue sections in 10mM Tris with 1mM EDTA, pH 9.0, for 45 min at 95°C followed by cooling at RT for 20 minutes);



Formalin-fixed, paraffin-embedded human Lung Adenocarcinoma stained with TTF-1 Monoclonal Antibody (NX2.1/690)



Formalin-fixed, paraffin-embedded human Thyroid stained with TTF-1 Monoclonal Antibody (NX2.1/690)



Formalin-fixed, paraffin-embedded Rat Lung stained with TTF-1 Monoclonal Antibody (NX2.1/690)