

12-9365: Anti-SCF antibody(DM194), Rabbit mAb

Clonality : Monoclonal
Clone Name : DM194
Application : ELISA,FACS
Reactivity : Human
Alternative Name : DCUA, DFNA69,FPH2,FPHH, Kitl,KL-1,MGF,SCF, SF,SHEP7,SLF

Description

This gene encodes the ligand of the tyrosine-kinase receptor encoded by the KIT locus. This ligand is a pleiotropic factor that acts in utero in germ cell and neural cell development, and hematopoiesis, all believed to reflect a role in cell migration. In adults, it functions pleiotropically, while mostly noted for its continued requirement in hematopoiesis. Two transcript variants encoding different isoforms have been found for this gene.

Product Info

Amount : 100 µg
Purification : Purified from cell culture supernatant by affinity chromatography
Content : Not Sterile
Storage condition : Store at -20°C for 12 months (Avoid repeated freezing and thawing)

Application Note

ELISA 1/5000-10000;FACS 1/100

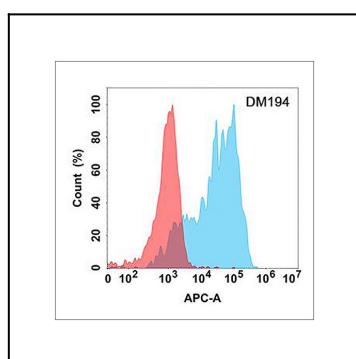


Figure 1. Flow cytometry analysis with Anti-SCF (DM194) on Expi293 cells transfected with human SCF (Blue histogram) or Expi293 transfected with irrelevant protein (Red histogram).