

## 12-9353: Anti-BTLA antibody(DM182), Rabbit mAb

**Clonality :** Monoclonal  
**Clone Name :** DM182  
**Application :** ELISA,FACS  
**Reactivity :** Human  
**Alternative Name :** BTLA, CD272

### Description

This gene encodes a member of the immunoglobulin superfamily. The encoded protein contains a single immunoglobulin (Ig) domain and is a receptor that relays inhibitory signals to suppress the immune response. Alternative splicing results in multiple transcript variants. Polymorphisms in this gene have been associated with an increased risk of rheumatoid arthritis.

### Product Info

**Amount :** 100 µg  
**Purification :** Purified from cell culture supernatant by affinity chromatography  
**Content :** Not Sterile  
**Storage condition :** Store at -20°C for 12 months (Avoid repeated freezing and thawing)

### Application Note

ELISA 1/5000-10000;FACS 1/100

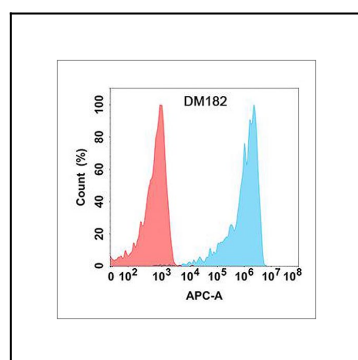


Figure 1. Flow cytometry analysis with Anti-BTLA (DM182) on Expi293 cells transfected with human BTLA (Blue histogram) or Expi293 transfected with irrelevant protein (Red histogram).