

## 12-9351: Anti-CLDN18.2 antibody(DM179), Rabbit mAb

**Clonality :** Monoclonal  
**Clone Name :** DM179  
**Application :** ELISA,FACS  
**Reactivity :** Human  
**Alternative Name :** claudin18.2

### Description

CLDN18 belongs to the large claudin family of proteins, which form tight junction strands in epithelial cells.

### Product Info

**Amount :** 100 µg  
**Purification :** Purified from cell culture supernatant by affinity chromatography  
**Content :** Not Sterile  
**Storage condition :** Store at -20°C for 12 months (Avoid repeated freezing and thawing)

### Application Note

ELISA 1/5000-10000;FACS 1/100

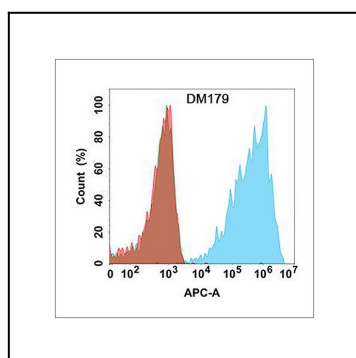


Figure 1. Flow cytometry analysis with Anti-CLDN18.2 (DM179) on Expi293 cells transfected with human CLDN18.2 (Blue histogram) or Expi293 transfected with human CLDN18.1 (Green histogram) or Expi293 transfected with irrelevant protein (Red histogram).