

12-9349: Anti-PD-1 antibody(DM177), Rabbit mAb

Clonality :	Monoclonal
Clone Name :	DM177
Application :	ELISA,FACS
Reactivity :	Human
Alternative Name :	PDCD1, PD1, CD279, SLEB2

Description

This protein is expressed in pro-B-cells and is thought to play a role in their differentiation. In mice, expression of this gene is induced in the thymus when anti-CD3 antibodies are injected and large numbers of thymocytes undergo apoptosis. Mice deficient for this gene bred on a BALB/c background developed dilated cardiomyopathy and died from congestive heart failure. These studies suggest that this gene product may also be important in T cell function and contribute to the prevention of autoimmune diseases.

Product Info

Amount :	100 µg
Purification :	Purified from cell culture supernatant by affinity chromatography
Content :	Not Sterile
Storage condition :	Store at -20°C for 12 months (Avoid repeated freezing and thawing)

Application Note

ELISA 1/5000-10000;FACS 1/100

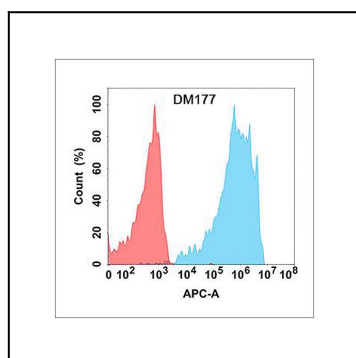


Figure 1. Flow cytometry analysis with Anti-PD-1 (DM177) on Expi293 cells transfected with human PD-1 (Blue histogram) or Expi293 transfected with irrelevant protein (Red histogram).