

12-9348: Anti-CD10 antibody(DM176), Rabbit mAb

Clonality :	Monoclonal
Clone Name :	DM176
Application :	ELISA,FACS
Reactivity :	Human
Alternative Name :	MME,CALLA,CD10,DKFZp686O16152,MGC126681,MGC126707,NEP,SFE,Nepriylsin

Description

The protein encoded by this gene is a type II transmembrane glycoprotein and a common acute lymphocytic leukemia antigen that is an important cell surface marker in the diagnosis of human acute lymphocytic leukemia (ALL). The encoded protein is present on leukemic cells of pre-B phenotype, which represent 85% of cases of ALL. This protein is not restricted to leukemic cells, however, and is found on a variety of normal tissues. The protein is a neutral endopeptidase that cleaves peptides at the amino side of hydrophobic residues and inactivates several peptide hormones including glucagon, enkephalins, substance P, neurotensin, oxytocin, and bradykinin.

Product Info

Amount :	100 µg
Purification :	Purified from cell culture supernatant by affinity chromatography
Content :	Not Sterile
Storage condition :	Store at -20°C for 12 months (Avoid repeated freezing and thawing)

Application Note

ELISA 1/5000-10000;FACS 1/100

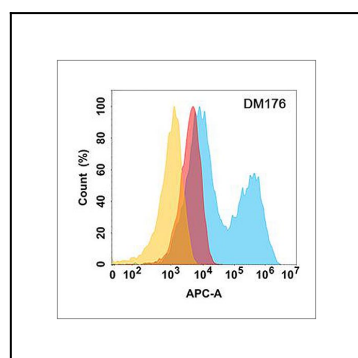


Figure 1. CD10 protein is highly expressed on the surface of Expi293 cell membrane. Flow cytometry analysis with Anti-CD10 (DM176) on Expi293 cells transfected with human CD10 (Blue histogram) or Expi293 transfected with irrelevant protein (Red histogram), and Isotype antibody on Expi293 transfected with irrelevant protein (Orange histogram).