

12-9339: Anti-EPHA2 antibody(DM167), Rabbit mAb

Clonality : Monoclonal
Clone Name : DM167
Application : ELISA,FACS
Reactivity : Human
Alternative Name : ARCC2, CTPA, CTPP1, CTRCT6, ECK

Description

This gene belongs to the ephrin receptor subfamily of the protein-tyrosine kinase family. EPH and EPH-related receptors have been implicated in mediating developmental events, particularly in the nervous system. Receptors in the EPH subfamily typically have a single kinase domain and an extracellular region containing a Cys-rich domain and 2 fibronectin type III repeats. The ephrin receptors are divided into 2 groups based on the similarity of their extracellular domain sequences and their affinities for binding ephrin-A and ephrin-B ligands. This gene encodes a protein that binds ephrin-A ligands. Mutations in this gene are the cause of certain genetically-related cataract disorders.

Product Info

Amount : 100 µg
Purification : Purified from cell culture supernatant by affinity chromatography
Content : Not Sterile
Storage condition : Store at -20°C for 12 months (Avoid repeated freezing and thawing)

Application Note

ELISA 1/5000-10000;FACS 1/100

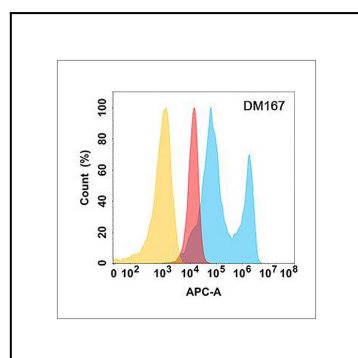


Figure 1. EPHA2 protein is highly expressed on the surface of Expi293 cell membrane. Flow cytometry analysis with Anti-EPHA2 (DM167) on Expi293 cells transfected with human EPHA2 (Blue histogram) or Expi293 transfected with irrelevant protein (Red histogram), and Isotype antibody on Expi293 transfected with irrelevant protein (Orange histogram).