

## 12-9338: Anti-CD37 antibody(DM166), Rabbit mAb

**Clonality :** Monoclonal  
**Clone Name :** DM166  
**Application :** ELISA,FACS  
**Reactivity :** Human  
**Alternative Name :** CD37, TSPAN26, Tspan-26

### Description

The protein encoded by this gene is a member of the transmembrane 4 superfamily, also known as the tetraspanin family. Most of these members are cell-surface proteins that are characterized by the presence of four hydrophobic domains. The proteins mediate signal transduction events that play a role in the regulation of cell development, activation, growth and motility. This encoded protein is a cell surface glycoprotein that is known to complex with integrins and other transmembrane 4 superfamily proteins. It may play a role in T-cell-B-cell interactions. Alternate splicing results in multiple transcript variants encoding different isoforms.

### Product Info

**Amount :** 100 µg  
**Purification :** Purified from cell culture supernatant by affinity chromatography  
**Content :** Not Sterile  
**Storage condition :** Store at -20°C for 12 months (Avoid repeated freezing and thawing)

### Application Note

ELISA 1/5000-10000;FACS 1/100

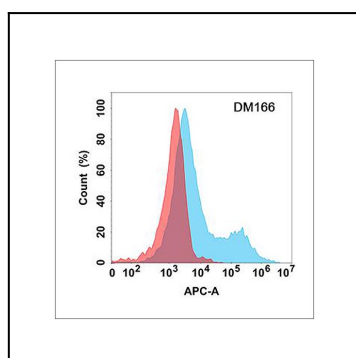


Figure 1. Flow cytometry analysis with Anti-CD37 (DM166) on Expi293 cells transfected with human CD37 (Blue histogram) or Expi293 transfected with irrelevant protein (Red histogram).