

## 12-9334: Anti-CD5 antibody(DM161), Rabbit mAb

**Clonality :** Monoclonal  
**Clone Name :** DM161  
**Application :** ELISA,FACS  
**Reactivity :** Human  
**Alternative Name :** CD5,LEU1

### Description

This gene encodes a member of the scavenger receptor cysteine-rich (SRCR) superfamily. Members of this family are secreted or membrane-anchored proteins mainly found in cells associated with the immune system. This protein is a type-I transmembrane glycoprotein found on the surface of thymocytes, T lymphocytes and a subset of B lymphocytes. The encoded protein contains three SRCR domains and may act as a receptor to regulate T-cell proliferation. Alternative splicing results in multiple transcript variants encoding different isoforms.

### Product Info

**Amount :** 100 µg  
**Purification :** Purified from cell culture supernatant by affinity chromatography  
**Content :** Not Sterile  
**Storage condition :** Store at -20°C for 12 months (Avoid repeated freezing and thawing)

### Application Note

ELISA 1/5000-10000;FACS 1/100

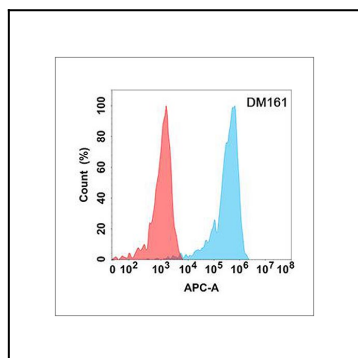


Figure 1. Flow cytometry analysis with Anti-CD5 (DM161) on Expi293 cells transfected with human CD5 (Blue histogram) or Expi293 transfected with irrelevant protein (Red histogram).