

12-9329: Anti-CD200 antibody(DM156), Rabbit mAb

Clonality :	Monoclonal
Clone Name :	DM156
Application :	ELISA,FACS
Reactivity :	Human
Alternative Name :	CD200,MOX1,MOX2,MRC,OX-2,My033

Description

This gene encodes a type I membrane glycoprotein containing two extracellular immunoglobulin domains, a transmembrane and a cytoplasmic domain. This gene is expressed by various cell types, including B cells, a subset of T cells, thymocytes, endothelial cells, and neurons. The encoded protein plays an important role in immunosuppression and regulation of anti-tumor activity. Alternative splicing results in multiple transcript variants encoding different isoforms.

Product Info

Amount :	100 µg
Purification :	Purified from cell culture supernatant by affinity chromatography
Content :	Not Sterile
Storage condition :	Store at -20°C for 12 months (Avoid repeated freezing and thawing)

Application Note

ELISA 1/5000-10000;FACS 1/100

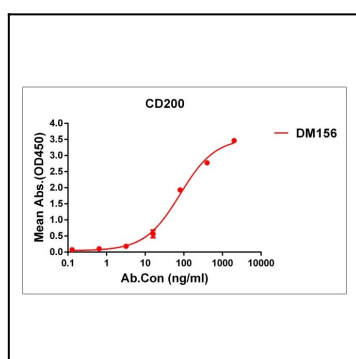


Figure 1. ELISA plate pre-coated by 1 µg/ml (100 µl/well) Human CD200 protein, His tagged protein can bind Rabbit anti-CD200 monoclonal antibody(clone: DM156) in a linear range of 5-1000 ng/ml.

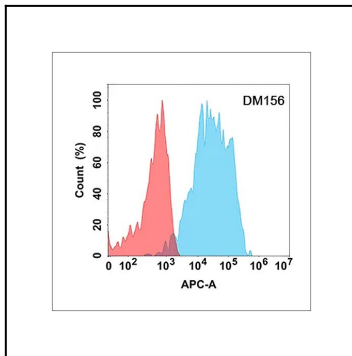


Figure 2. Flow cytometry analysis with Anti-CD200 (DM156) on Expi293 cells transfected with human CD200 (Blue histogram) or Expi293 transfected with irrelevant protein (Red histogram).