

12-9326: Anti-B7H6 antibody(DM153), Rabbit mAb

Clonality : Monoclonal
Clone Name : DM153
Application : ELISA,FACS
Reactivity : Human
Alternative Name : B7H6,NCR3LG1,B7 Homolog 6

Description

B7H6 belongs to the B7 family (see MIM 605402) and is selectively expressed on tumor cells. Interaction of B7H6 with NKp30 (NCR3; MIM 611550) results in natural killer (NK) cell activation and cytotoxicity.

Product Info

Amount : 100 µg
Purification : Purified from cell culture supernatant by affinity chromatography
Content : Not Sterile
Storage condition : Store at -20°C for 12 months (Avoid repeated freezing and thawing)

Application Note

ELISA 1/5000-10000;FACS 1/100

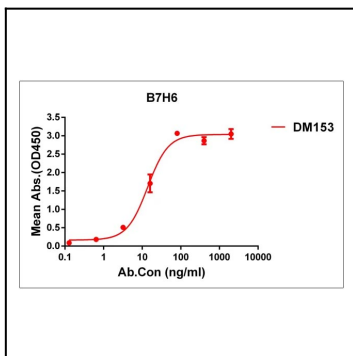


Figure 1. ELISA plate pre-coated by 1 µg/ml (100 µl/well) Human B7H6 protein, His tagged protein can bind Rabbit anti-B7H6 monoclonal antibody(clone: DM153) in a linear range of 5-100 ng/ml.

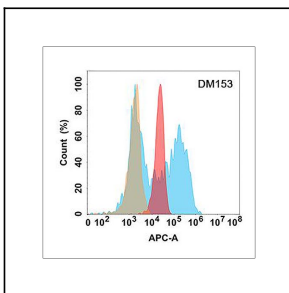


Figure 2. B7H6 protein is highly expressed on the surface of Expi293 cell membrane. Flow cytometry analysis with Anti-B7H6 (DM153) on Expi293 cells transfected with human B7H6 (Blue histogram) or Expi293 transfected with irrelevant protein (Red histogram), and Isotype antibody on Expi293 transfected with irrelevant protein (Orange histogram).