

12-9321: Anti-IL2RA antibody(DM148), Rabbit mAb

| | |
|---------------------------|-------------------------------|
| Clonality : | Monoclonal |
| Clone Name : | DM148 |
| Application : | ELISA,FACS |
| Reactivity : | Human |
| Alternative Name : | IL2RA,CD25,p55,IL2-RA,IL-2-RA |

Description

The interleukin 2 (IL2) receptor alpha (IL2RA) and beta (IL2RB) chains, together with the common gamma chain (IL2RG), constitute the high-affinity IL2 receptor. Homodimeric alpha chains (IL2RA) result in low-affinity receptor, while homodimeric beta (IL2RB) chains produce a medium-affinity receptor. Normally an integral-membrane protein, soluble IL2RA has been isolated and determined to result from extracellular proteolysis. Alternately-spliced IL2RA mRNAs have been isolated, but the significance of each is presently unknown. Mutations in this gene are associated with interleukin 2 receptor alpha deficiency.

Product Info

| | |
|----------------------------|--|
| Amount : | 100 µg |
| Purification : | Purified from cell culture supernatant by affinity chromatography |
| Content : | Not Sterile |
| Storage condition : | Store at -20°C for 12 months (Avoid repeated freezing and thawing) |

Application Note

ELISA 1/5000-10000;FACS 1/100

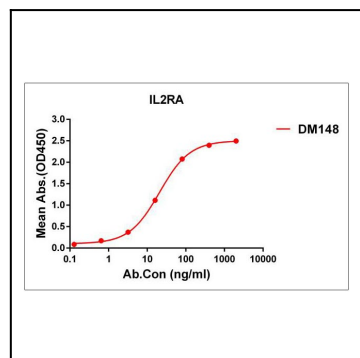


Figure 1. ELISA plate pre-coated by 1 µg/ml (100 µl/well) Human IL2RA protein, His tagged protein can bind Rabbit anti-IL2RA monoclonal antibody(clone: DM148) in a linear range of 5-100 ng/ml.

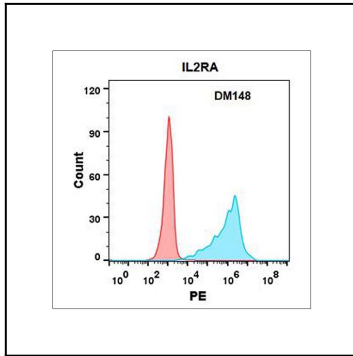


Figure 2. Flow cytometry analysis with Anti-IL2RA (DM148) on Expi293 cells transfected with human IL2RA (Blue histogram) or Expi293 transfected with irrelevant protein (Red histogram).