

## 12-9320: Anti-EPCAM antibody(DM147), Rabbit mAb

**Clonality :** Monoclonal

**Clone Name :** DM147

**Application :** ELISA,FACS

**Reactivity :** Human

**Alternative Name :** EPCAM,TACSTD1,TROP1,CD326,DIAR5,EGP2,EGP314,EGP40,ESA,GA733-2,HNPCC8,HNPCC-8,KS1/4,KSA,M4S1,MIC18,MK1

### Description

This gene encodes a carcinoma-associated antigen and is a member of a family that includes at least two type I membrane proteins. This antigen is expressed on most normal epithelial cells and gastrointestinal carcinomas and functions as a homotypic calcium-independent cell adhesion molecule. The antigen is being used as a target for immunotherapy treatment of human carcinomas. Mutations in this gene result in congenital tufting enteropathy.

### Product Info

**Amount :** 100 µg

**Purification :** Purified from cell culture supernatant by affinity chromatography

**Content :** Not Sterile

**Storage condition :** Store at -20°C for 12 months (Avoid repeated freezing and thawing)

### Application Note

ELISA 1/5000-10000;FACS 1/100

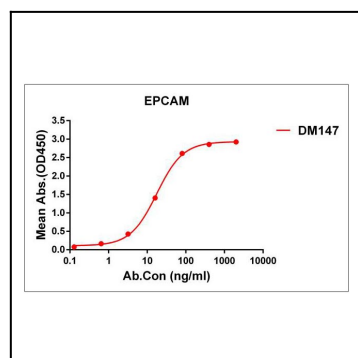


Figure 1. ELISA plate pre-coated by 1 µg/ml (100 µl/well) Human EPCAM protein, His tagged protein can bind Rabbit anti-EPCAM monoclonal antibody(clone: DM147) in a linear range of 5-100 ng/ml.

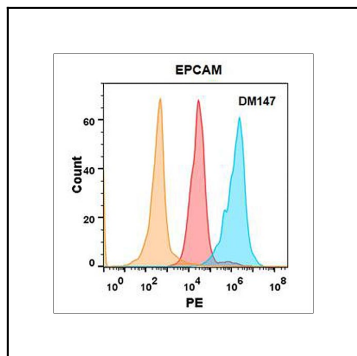


Figure 2. EPCAM protein is highly expressed on the surface of Expi293 cell membrane. Flow cytometry analysis with Anti-EPCAM (DM147) on Expi293 cells transfected with human EPCAM (Blue histogram) or Expi293 transfected with irrelevant protein (Red histogram), and Isotype antibody on Expi293 transfected with irrelevant protein (Orange histogram).