

12-9319: Anti-CD155 antibody(DM146), Rabbit mAb

Clonality :	Monoclonal
Clone Name :	DM146
Application :	ELISA,FACS
Reactivity :	Human
Alternative Name :	PVR, FLJ25946, PVS, CD155, TAGE4, HVED, NECL5

Description

The protein encoded by this gene is a transmembrane glycoprotein belonging to the immunoglobulin superfamily. The external domain mediates cell attachment to the extracellular matrix molecule vitronectin, while its intracellular domain interacts with the dynein light chain Tctex-1/DYNLT1. The gene is specific to the primate lineage, and serves as a cellular receptor for poliovirus in the first step of poliovirus replication. Multiple transcript variants encoding different isoforms have been found for this gene.

Product Info

Amount :	100 µg
Purification :	Purified from cell culture supernatant by affinity chromatography
Content :	Not Sterile
Storage condition :	Store at -20°C for 12 months (Avoid repeated freezing and thawing)

Application Note

ELISA 1/5000-10000;FACS 1/100

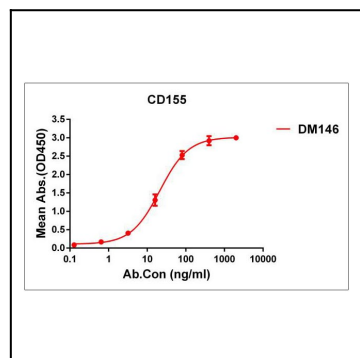


Figure 1. ELISA plate pre-coated by 1 µg/ml (100 µl/well) Human CD155 protein, mFc tagged protein can bind Rabbit anti-CD155 monoclonal antibody(clone: DM146) in a linear range of 5-100 ng/ml.

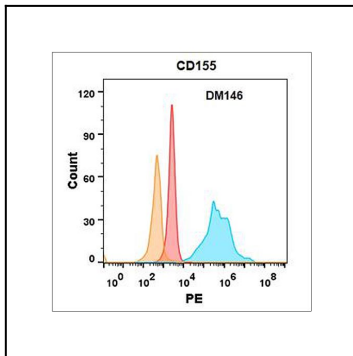


Figure 2. CD155 protein is highly expressed on the surface of Expi293 cell membrane. Flow cytometry analysis with Anti-CD155 (DM146) on Expi293 cells transfected with human CD155 (Blue histogram) or Expi293 transfected with irrelevant protein (Red histogram), and Isotype antibody on Expi293 transfected with irrelevant protein (Orange histogram).