

12-9318: Anti-CD46 antibody(DM145), Rabbit mAb

Clonality :	Monoclonal
Clone Name :	DM145
Application :	ELISA,FACS
Reactivity :	Human
Alternative Name :	CD46,AHUS2,MCP,MIC10,TLX,TRA2.10

Description

The protein encoded by this gene is a type I membrane protein and is a regulatory part of the complement system. The encoded protein has cofactor activity for inactivation of complement components C3b and C4b by serum factor I, which protects the host cell from damage by complement. In addition, the encoded protein can act as a receptor for the Edmonston strain of measles virus, human herpesvirus-6, and type IV pili of pathogenic *Neisseria*. Finally, the protein encoded by this gene may be involved in the fusion of the spermatozoa with the oocyte during fertilization. Mutations at this locus have been associated with susceptibility to hemolytic uremic syndrome. Alternatively spliced transcript variants encoding different isoforms have been described.

Product Info

Amount :	100 µg
Purification :	Purified from cell culture supernatant by affinity chromatography
Content :	Not Sterile
Storage condition :	Store at -20°C for 12 months (Avoid repeated freezing and thawing)

Application Note

ELISA 1/5000-10000;FACS 1/100

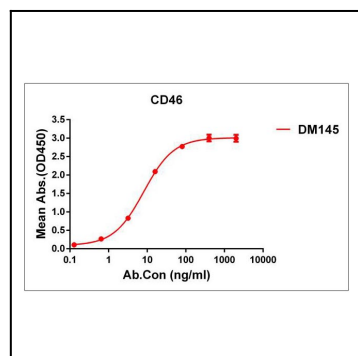


Figure 1. ELISA plate pre-coated by 1 µg/ml (100 µl/well) Human CD46 protein, His tagged protein can bind Rabbit anti-CD46 monoclonal antibody(clone: DM145) in a linear range of 1-60 ng/ml.

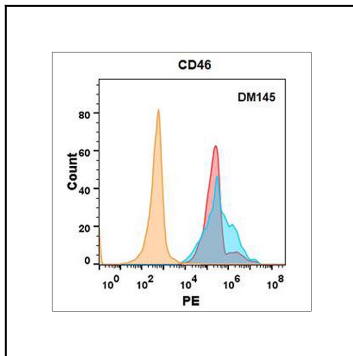


Figure 2. CD46 protein is highly expressed on the surface of Expi293 cell membrane. Flow cytometry analysis with Anti-CD46 (DM145) on Expi293 cells transfected with human CD46 (Blue histogram) or Expi293 transfected with irrelevant protein (Red histogram), and Isotype antibody on Expi293 transfected with irrelevant protein (Orange histogram).