

## 12-9309: Anti-CD34 antibody(DM135), Rabbit mAb

**Clonality :** Monoclonal  
**Clone Name :** DM135  
**Application :** ELISA,FACS  
**Reactivity :** Human  
**Alternative Name :** CD34

### Description

The protein encoded by this gene may play a role in the attachment of stem cells to the bone marrow extracellular matrix or to stromal cells. This single-pass membrane protein is highly glycosylated and phosphorylated by protein kinase C. Two transcript variants encoding different isoforms have been found for this gene.

### Product Info

**Amount :** 100 µg  
**Purification :** Purified from cell culture supernatant by affinity chromatography  
**Content :** Not Sterile  
**Storage condition :** Store at -20°C for 12 months (Avoid repeated freezing and thawing)

### Application Note

ELISA 1/5000-10000;FACS 1/100

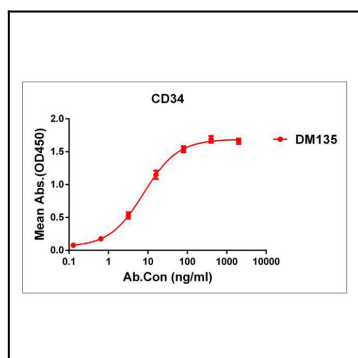


Figure 1. ELISA plate pre-coated by 1 µg/ml (100 µl/well) Human CD34 protein, His tagged protein can bind Rabbit anti-CD34 monoclonal antibody(clone: DM135) in a linear range of 0. 1-12 ng/ml.

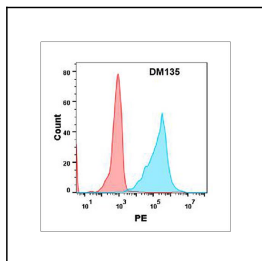


Figure 2. Flow cytometry analysis with Anti-CD34 (DM135) on Expi293 cells transfected with human CD34 (Blue histogram) or Expi293 transfected with irrelevant protein(Red histogram).