

12-9308: Anti-CD34 antibody(DM134), Rabbit mAb

Clonality : Monoclonal
Clone Name : DM134
Application : ELISA,FACS
Reactivity : Human
Alternative Name : CD34

Description

The protein encoded by this gene may play a role in the attachment of stem cells to the bone marrow extracellular matrix or to stromal cells. This single-pass membrane protein is highly glycosylated and phosphorylated by protein kinase C. Two transcript variants encoding different isoforms have been found for this gene.

Product Info

Amount : 100 µg
Purification : Purified from cell culture supernatant by affinity chromatography
Content : Not Sterile
Storage condition : Store at -20°C for 12 months (Avoid repeated freezing and thawing)

Application Note

ELISA 1/5000-10000;FACS 1/100

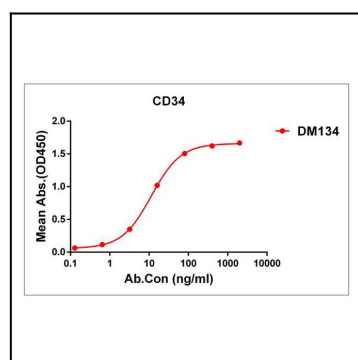


Figure 1. ELISA plate pre-coated by 1 µg/ml (100 µl/well) Human CD34 protein, His tagged protein can bind Rabbit anti-CD34 monoclonal antibody(clone: DM134) in a linear range of 0.2-12 ng/ml.

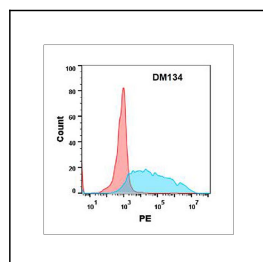


Figure 2. Flow cytometry analysis with Anti-CD34 (DM134) on Expi293 cells transfected with human CD34 (Blue histogram) or Expi293 transfected with irrelevant protein (Red histogram).