

## 12-9302: Anti-EGFR antibody(DM128), Rabbit mAb

<b>Clonality :</b>	Monoclonal
<b>Clone Name :</b>	DM128
<b>Application :</b>	ELISA,FACS
<b>Reactivity :</b>	Human
<b>Alternative Name :</b>	EGFR,ERBB,ERBB1,HER1,PIG61,mENA

### Description

The protein encoded by this gene is a transmembrane glycoprotein that is a member of the protein kinase superfamily. This protein is a receptor for members of the epidermal growth factor family. EGFR is a cell surface protein that binds to epidermal growth factor. Binding of the protein to a ligand induces receptor dimerization and tyrosine autophosphorylation and leads to cell proliferation. Mutations in this gene are associated with lung cancer.

### Product Info

<b>Amount :</b>	100 µg
<b>Purification :</b>	Purified from cell culture supernatant by affinity chromatography
<b>Content :</b>	Not Sterile
<b>Storage condition :</b>	Store at -20°C for 12 months (Avoid repeated freezing and thawing)

### Application Note

ELISA 1/5000-10000;FACS 1/100

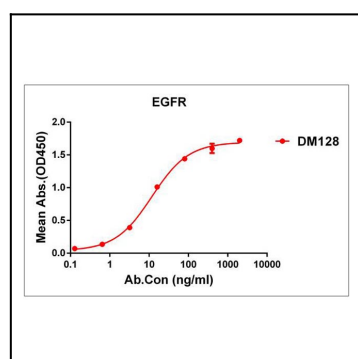


Figure 1. ELISA plate pre-coated by 1 µg/ml (100 µl/well) Human EGFR protein, His tagged protein can bind Rabbit anti-EGFR monoclonal antibody(clone: DM128) in a linear range of 0. 1-18 ng/ml.

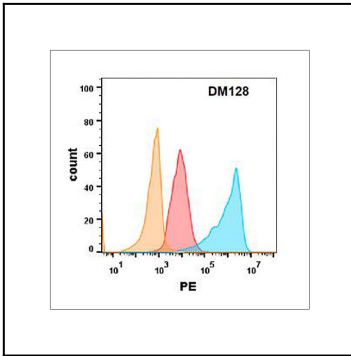


Figure 2. EGFR protein is highly expressed on the surface of Expi293 cell membrane. Flow cytometry analysis with Anti-EGFR (DM128) on Expi293 cells transfected with human EGFR(Blue histogram) or Expi293 transfected with irrelevant protein (Red histogram),and Isotype antibody on Expi293 transfected with irrelevant protein(Orange histogram)