

12-9292: Anti-CD7 antibody(DM118), Rabbit mAb

Clonality :	Monoclonal
Clone Name :	DM118
Application :	ELISA,FACS
Reactivity :	Human
Alternative Name :	CD7,GP40,TP41,LEU-9,Tp40,LEU9

Description

This gene encodes a transmembrane protein which is a member of the immunoglobulin superfamily. This protein is found on thymocytes and mature T cells. It plays an essential role in T-cell interactions and also in T-cell/B-cell interaction during early lymphoid development.

Product Info

Amount :	100 µg
Purification :	Purified from cell culture supernatant by affinity chromatography
Content :	Not Sterile
Storage condition :	Store at -20°C for 12 months (Avoid repeated freezing and thawing)

Application Note

ELISA 1/5000-10000;FACS 1/100

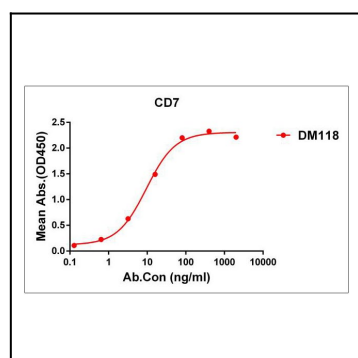


Figure 1. ELISA plate pre-coated by 1 µg/ml (100 µl/well) Human CD7 protein, mFc-His tagged protein can bind Rabbit anti-CD7 monoclonal antibody (clone: DM118) in a linear range of 0.2-60 ng/ml.

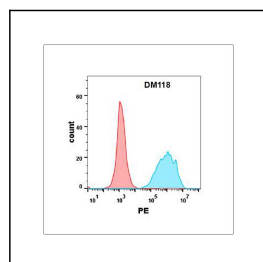


Figure 2. Flow cytometry analysis with Anti-CD7 (DM118) on Expi293 cells transfected with human CD7 (Blue histogram) or Expi293 transfected with irrelevant protein (Red histogram).