

## 12-9285: Anti-B7-1 antibody(DM111), Rabbit mAb

<b>Clonality :</b>	Monoclonal
<b>Clone Name :</b>	DM111
<b>Application :</b>	ELISA,FACS
<b>Reactivity :</b>	Human
<b>Alternative Name :</b>	CD80,B7,B7-1,B7.1,BB1,CD28LG,CD28LG1,LAB7,B71

### Description

The protein encoded by this gene is a membrane receptor that is activated by the binding of CD28 or CTLA-4. The activated protein induces T-cell proliferation and cytokine production. This protein can act as a receptor for adenovirus subgroup B and may play a role in lupus neuropathy.

### Product Info

<b>Amount :</b>	100 µg
<b>Purification :</b>	Purified from cell culture supernatant by affinity chromatography
<b>Content :</b>	Not Sterile
<b>Storage condition :</b>	Store at -20°C for 12 months (Avoid repeated freezing and thawing)

### Application Note

ELISA 1/5000-10000;FACS 1/100

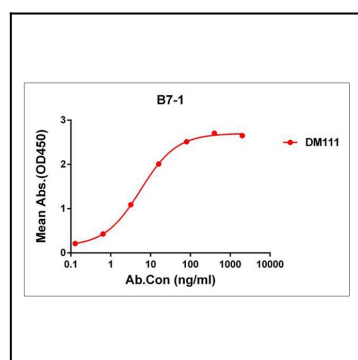


Figure 1. ELISA plate pre-coated by 2 µg/ml (100 µl/well) Human B7-1 protein, hFc tagged protein can bind Rabbit anti-B7-1 monoclonal antibody (clone: DM111) in a linear range of 0.2-80 ng/ml.

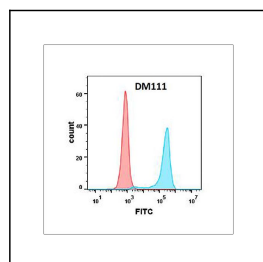


Figure 2. Flow cytometry analysis with Anti-B7-1 (DM111) on Expi293 cells transfected with human B7-1(Blue histogram) or Expi293 transfected with irrelevant protein(Red histogram).