

## 12-9281: Anti-CSF1R antibody(DM107), Rabbit mAb

<b>Clonality :</b>	Monoclonal
<b>Clone Name :</b>	DM107
<b>Application :</b>	ELISA,FACS
<b>Reactivity :</b>	Human
<b>Alternative Name :</b>	CSF1R,C-FMS,CD115,CSFR,FIM2,FMS,M-CSFR

### Description

The protein encoded by this gene is the receptor for colony stimulating factor 1, a cytokine which controls the production, differentiation, and function of macrophages. This receptor mediates most if not all of the biological effects of this cytokine. Ligand binding activates the receptor kinase through a process of oligomerization and transphosphorylation. The encoded protein is a tyrosine kinase transmembrane receptor and member of the CSF1/PDGF receptor family of tyrosine-protein kinases. Mutations in this gene have been associated with a predisposition to myeloid malignancy. The first intron of this gene contains a transcriptionally inactive ribosomal protein L7 processed pseudogene oriented in the opposite direction. Alternative splicing results in multiple transcript variants. Expression of a splice variant from an LTR promoter has been found in Hodgkin Lymphoma (HL), HL cell lines and anaplastic large cell lymphoma.

### Product Info

<b>Amount :</b>	100 µg
<b>Purification :</b>	Purified from cell culture supernatant by affinity chromatography
<b>Content :</b>	Not Sterile
<b>Storage condition :</b>	Store at -20°C for 12 months (Avoid repeated freezing and thawing)

### Application Note

ELISA 1/5000-10000;FACS 1/100

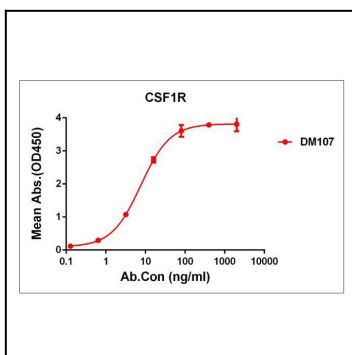


Figure 1. ELISA plate pre-coated by 2 µg/ml (100 µl/well) Human CSF1R protein, His tagged protein can bind Rabbit anti- CSF1R monoclonal antibody (clone: DM107) in a linear range of 0.6-40 ng/ml.

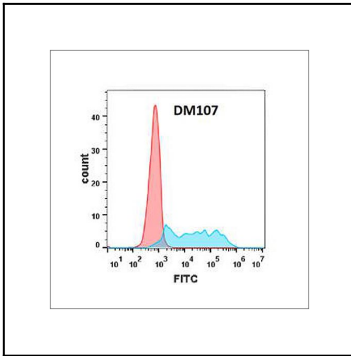


Figure 2. Flow cytometry analysis with Anti-CSF1R (DM107) on Expi293 cells transfected with human CSF1R (Blue histogram) or Expi293 transfected with irrelevant protein (Red histogram).