

12-9265: Anti-GPRC5D antibody(DM91), Rabbit mAb

Clonality :	Monoclonal
Clone Name :	DM91
Application :	ELISA,FACS
Reactivity :	Human
Uniprot ID :	Q9NZD1
Alternative Name :	GPRC5D
Isotype :	Rabbit IgG

Description

The protein encoded by this gene is a member of the G protein-coupled receptor family; however, the specific function of this gene has not yet been determined.

Product Info

Amount :	100 µg
Purification :	Purified from cell culture supernatant by affinity chromatography
Content :	Lyophilized from sterile PBS, pH 7.4. Normally 5 % " 8% trehalose is added as protectants before lyophilization.
Storage condition :	Store at -20°C to -80°C for 12 months in lyophilized form. After reconstitution, if not intended for use within a month, aliquot and store at -80°C (Avoid repeated freezing and thawing). Lyophilized proteins are shipped at ambient temperature.

Application Note

ELISA 1:5000-10000; Flow Cyt 1:100

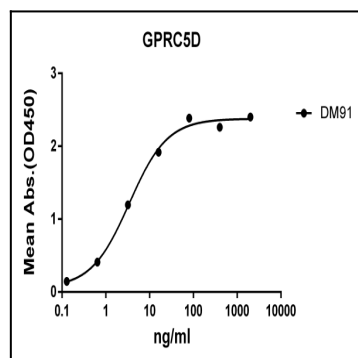


Figure 1: ELISA plate pre-coated by 2 µg/ml (100 µl/well) Human GPRC5D protein, hFc-His tagged protein can bind Rabbit anti-GPRC5D monoclonal antibody (clone: DM91) in a linear range of 0.256-32 ng/ml.

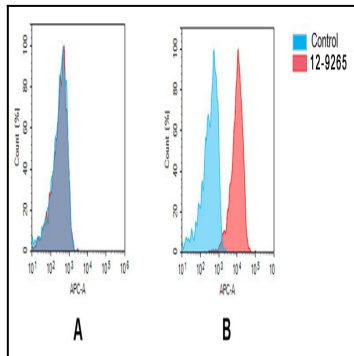


Figure 2 . Flow cytometry analysis of antigen binding of rabbit anti-human GPRC5D mAb (12-9265). (A) 12-9265 does not bind to Jurkat cells that do not express GPRC5D. (B) A clear peak shift of 12-9265 was seen compared to the control when incubated with GPRC5D-expressing MM.1S cells, indicating strong binding of 12-9265 to GPRC5D. Antibodies were incubated at 5 μ g/mL.