

12-9263: Anti-GPRC5D antibody(DM89), Rabbit mAb(Discontinued)

Clonality : Monoclonal
Clone Name : DM89
Application : ELISA,FACS
Reactivity : Human
Alternative Name : GPRC5D

Description

The protein encoded by this gene is a member of the G protein-coupled receptor family; however, the specific function of this gene has not yet been determined.

Product Info

Amount : 100 µg
Purification : Purified from cell culture supernatant by affinity chromatography
Content : Not Sterile
Storage condition : Store at -20°C for 12 months (Avoid repeated freezing and thawing)

Application Note

ELISA 1/5000-10000;FACS 1/100

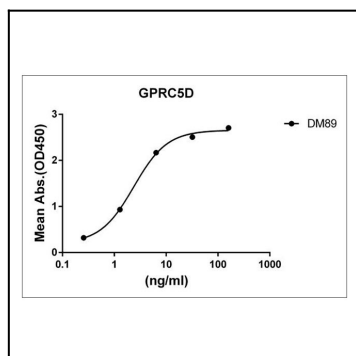


Figure 1. ELISA plate pre-coated by 2 µg/ml (100 µl/well) Human GPRC5D protein, hFc-His tagged protein can bind Rabbit anti-GPRC5D monoclonal antibody (clone: DM89) in a linear range of 0.256-32 ng/ml.

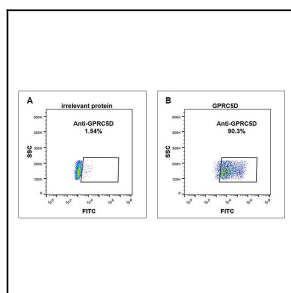


Figure 2. Expi 293 cell line transfected with irrelevant protein (A) and human GPRC5D (B) were surface stained with Rabbit anti-GPRC5D monoclonal antibody 1 µg/ml (clone: DM89) followed by Alexa 488-conjugated anti-rabbit IgG secondary antibody.