

## 12-9257: Anti-TIM3 antibody(DM83), Rabbit mAb

<b>Clonality :</b>	Monoclonal
<b>Clone Name :</b>	DM83
<b>Application :</b>	ELISA,FACS
<b>Reactivity :</b>	Human
<b>Alternative Name :</b>	HAVCR2, TIM-3, TIMD3, FLJ14428, KIM3,KIM-3

### Description

The protein encoded by this gene belongs to the immunoglobulin superfamily, and TIM family of proteins. CD4-positive T helper lymphocytes can be divided into types 1 (Th1) and 2 (Th2) on the basis of their cytokine secretion patterns. Th1 cells are involved in cell-mediated immunity to intracellular pathogens and delayed-type hypersensitivity reactions, whereas, Th2 cells are involved in the control of extracellular helminthic infections and the promotion of atopic and allergic diseases. This protein is a Th1-specific cell surface protein that regulates macrophage activation, and inhibits Th1-mediated auto- and alloimmune responses, and promotes immunological tolerance.

### Product Info

<b>Amount :</b>	100 µg
<b>Purification :</b>	Purified from cell culture supernatant by affinity chromatography
<b>Content :</b>	Not Sterile
<b>Storage condition :</b>	Store at -20°C for 12 months (Avoid repeated freezing and thawing)

### Application Note

ELISA 1/5000-10000;FACS 1/100

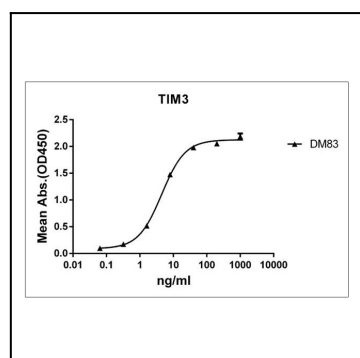


Figure 1. ELISA plate pre-coated by 2 µg/ml (100 µl/well) Human TIM3 protein, mFc-His tagged protein can bind Rabbit anti-TIM3 monoclonal antibody (clone: DM83) in a linear range of 0.32-40 ng/ml.

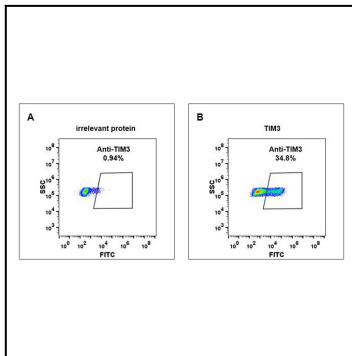


Figure 2. Expi 293 cell line transfected with irrelevant protein (A) and human TIM3 (B) were surface stained with Rabbit anti-TIM3 monoclonal antibody  $1\frac{1}{4}$ g/ml (clone: DM83) followed by Alexa 488-conjugated anti-rabbit IgG secondary antibody.