

12-9250: Anti-Trop2 antibody(DM76), Rabbit mAb

Clonality : Monoclonal
Clone Name : DM76
Application : ELISA,FACS
Reactivity : Human
Alternative Name : TACSTD2, GA733-1, M1S1, TROP-2,

Description

This intronless gene encodes a carcinoma-associated antigen. This antigen is a cell surface receptor that transduces calcium signals. Mutations of this gene have been associated with gelatinous drop-like corneal dystrophy.

Product Info

Amount : 100 µg
Purification : Purified from cell culture supernatant by affinity chromatography
Content : Not Sterile
Storage condition : Store at -20°C for 12 months (Avoid repeated freezing and thawing)

Application Note

ELISA 1/5000-10000;FACS 1/100

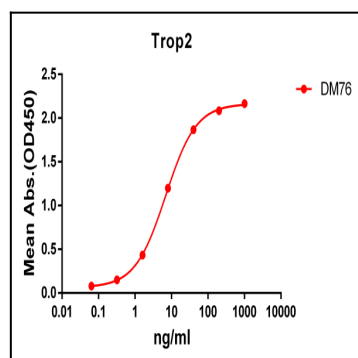


Figure 1. ELISA plate pre-coated by 2 µg/ml (100 µl/well) Human Trop2 protein, mFc-His tagged protein can bind Rabbit anti-Trop2 monoclonal antibody (clone: DM76) in a linear range of 1-100 ng/ml.

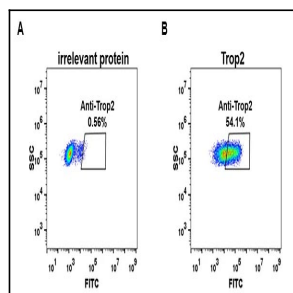


Figure 2. Expi 293 cell line transfected with irrelevant protein (A) and human Trop2 (B) were surface stained with Rabbit anti-Trop2 monoclonal antibody 1 µg/ml (clone: DM76) followed by Alexa 488-conjugated anti-rabbit IgG secondary antibody.

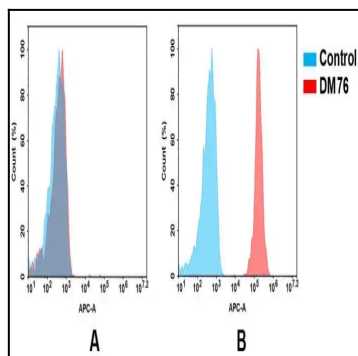


Figure 3. Flow cytometry analysis of antigen binding of rabbit anti-human Trop2 mAb. (A) aAnti-human Trop2 does not bind to 293T cells that do not express Trop2. (B) A clear peak shift of anti-human Trop2 was seen compared to the control when incubated with Trop2-expressing A431 cells, indicating strong binding of anti-human Trop2 to Trop2. Antibodies were incubated at 2 μ g/mL.