

12-9247: Anti-CLEC2D antibody(DMC394), IgG1 Chimeric mAb

| | |
|---------------------------|--|
| Clonality : | Monoclonal |
| Clone Name : | DMC394 |
| Application : | FACS |
| Reactivity : | Human |
| Alternative Name : | C-type lectin domain family 2 member D?Lectin-like NK cell receptor?LLT-1?Osteoclast inhibitory lectin |

Description

This gene encodes a member of the natural killer cell receptor C-type lectin family. The encoded protein inhibits osteoclast formation and contains a transmembrane domain near the N-terminus as well as the C-type lectin-like extracellular domain. Several alternatively spliced transcript variants have been identified for this gene.

Product Info

| | |
|----------------------------|--|
| Amount : | 100 µg |
| Purification : | Purified from cell culture supernatant by affinity chromatography |
| Content : | Not Sterile |
| Storage condition : | Store at -20°C for 12 months (Avoid repeated freezing and thawing) |

Application Note

FACS 1/100

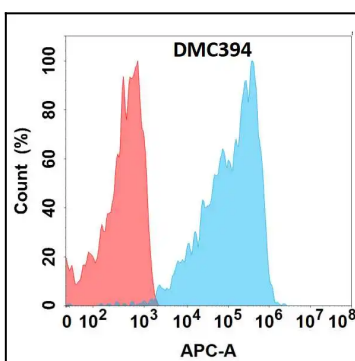


Figure 1. Flow cytometry analysis with Anti-CLEC2D (DMC394) on Expi293 cells transfected with human CLEC2D (Blue histogram) or Expi293 transfected with irrelevant protein (Red histogram).