

12-9241: Anti-EDA antibody(DMC388), IgG1 Chimeric mAb

Clonality :	Monoclonal
Clone Name :	DMC388
Application :	FACS
Reactivity :	Human
Alternative Name :	ED1, EDA2

Description

The protein encoded by this gene is a type II membrane protein that can be cleaved by furin to produce a secreted form. The encoded protein, which belongs to the tumor necrosis factor family, acts as a homotrimer and may be involved in cell-cell signaling during the development of ectodermal organs. Defects in this gene are a cause of ectodermal dysplasia, anhidrotic, which is also known as X-linked hypohidrotic ectodermal dysplasia. Several transcript variants encoding many different isoforms have been found for this gene.

Product Info

Amount :	100 µg
Purification :	Purified from cell culture supernatant by affinity chromatography
Content :	Not Sterile
Storage condition :	Store at -20°C for 12 months (Avoid repeated freezing and thawing)

Application Note

FACS 1/100

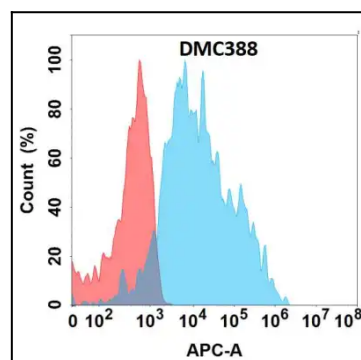


Figure 1. Flow cytometry analysis with Anti-EDA (DMC388) on Expi293 cells transfected with human EDA (Blue histogram) or Expi293 transfected with irrelevant protein (Red histogram).