

## 12-9238: Anti-ADGRE2 antibody(DMC370), IgG1 Chimeric mAb

<b>Clonality :</b>	Monoclonal
<b>Clone Name :</b>	DMC370
<b>Application :</b>	FACS
<b>Reactivity :</b>	Human
<b>Alternative Name :</b>	Adhesion G protein-coupled receptor E2?EGF-like module receptor 2?EGF-like module-containing mucin-like hormone receptor-like 2?CD312

### Description

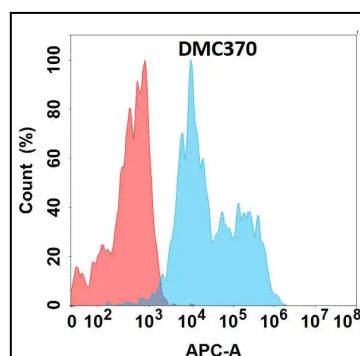
This gene encodes a member of the class B seven-span transmembrane (TM7) subfamily of G-protein coupled receptors. These proteins are characterized by an extended extracellular region with a variable number of N-terminal epidermal growth factor-like domains coupled to a TM7 domain via a mucin-like spacer domain. The encoded protein is expressed mainly in myeloid cells where it promotes cell-cell adhesion through interaction with chondroitin sulfate chains. This gene is situated in a cluster of related genes on chromosome 19. Alternatively spliced transcript variants encoding multiple isoforms have been observed for this gene.

### Product Info

<b>Amount :</b>	100 µg
<b>Purification :</b>	Purified from cell culture supernatant by affinity chromatography
<b>Content :</b>	Not Sterile
<b>Storage condition :</b>	Store at -20°C for 12 months (Avoid repeated freezing and thawing)

### Application Note

FACS 1/100



Flow cytometry analysis with Anti-ADGRE2 (DMC370) on Expi293 cells transfected with human ADGRE2 (Blue histogram) or Expi293 transfected with irrelevant protein (Red histogram).