

## 12-9236: Anti-GPR75 antibody(DMC368), IgG1 Chimeric mAb

<b>Clonality :</b>	Monoclonal
<b>Clone Name :</b>	DMC368
<b>Application :</b>	FACS
<b>Reactivity :</b>	Human
<b>Uniprot ID :</b>	095800
<b>Alternative Name :</b>	Probable G-protein coupled receptor 75
<b>Isotype :</b>	Rabbit/Human Fc chimeric IgG1

### Description

GPR75 is a member of the G protein-coupled receptor family. GPRs are cell surface receptors that activate guanine-nucleotide binding proteins upon the binding of a ligand.

### Product Info

<b>Amount :</b>	100 µg
<b>Purification :</b>	Purified from cell culture supernatant by affinity chromatography
<b>Content :</b>	Lyophilized from sterile PBS, pH 7.4, content 5-8% trehalose. Reconstitute in sterile water according to your requirement.
<b>Storage condition :</b>	Store at -20°C for 12 months (Avoid repeated freezing and thawing)

### Application Note

FACS 1/100

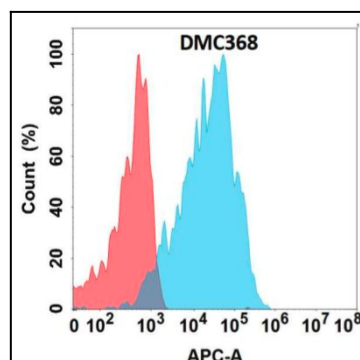


Figure 1. Flow cytometry analysis with Anti-GPR75 (DMC368) on Expi293 cells transfected with human GPR75 (Blue histogram) or Expi293 transfected with irrelevant protein (Red histogram).