

## 12-9235: Anti-ICAM1 antibody(DMC367), IgG1 Chimeric mAb

**Clonality :** Monoclonal  
**Clone Name :** DMC367  
**Application :** FACS  
**Reactivity :** Human  
**Alternative Name :** ICAM1,BB2,CD54,P3.58

### Description

This gene encodes a cell surface glycoprotein which is typically expressed on endothelial cells and cells of the immune system. It binds to integrins of type CD11a / CD18, or CD11b / CD18 and is also exploited by Rhinovirus as a receptor.

### Product Info

**Amount :** 100 µg  
**Purification :** Purified from cell culture supernatant by affinity chromatography  
**Content :** Not Sterile  
**Storage condition :** Store at -20°C for 12 months (Avoid repeated freezing and thawing)

### Application Note

FACS 1/100

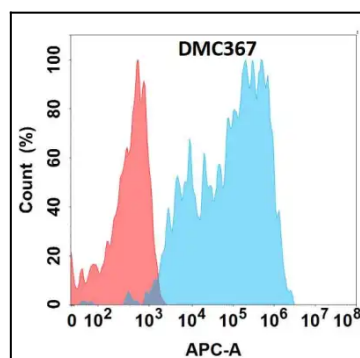


Figure 1. Flow cytometry analysis with Anti-ICAM1 (DMC367) on Expi293 cells transfected with human ICAM1 (Blue histogram) or Expi293 transfected with irrelevant protein (Red histogram).

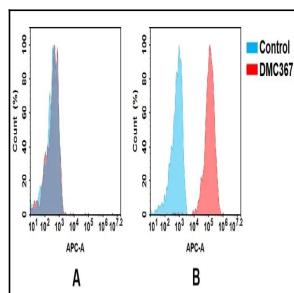


Figure 2. Flow cytometry analysis of antigen binding of anti-human ICAM-1 mAb. (A) Anti-human ICAM-1 mAb does not bind to CHO-S cells that do not express ICAM-1. (B) A clear peak shift of anti-human ICAM-1 mAb was seen compared to the control when incubated with ICAM-1-expressing Siha cells, indicating strong binding of anti-human ICAM-1 mAb to ICAM-1. Antibodies were incubated at 5 µg/mL.