

12-9229: Anti-SLAMF5 antibody(DMC286), IgG1 Chimeric mAb

| | |
|---------------------------|-------------------------|
| Clonality : | Monoclonal |
| Clone Name : | DMC286 |
| Application : | FACS |
| Reactivity : | Human |
| Alternative Name : | CD84,SLAMF5,LY9B,SLAMF5 |

Description

This gene encodes a membrane glycoprotein that is a member of the signaling lymphocyte activation molecule (SLAM) family. This family forms a subset of the larger CD2 cell-surface receptor Ig superfamily. The encoded protein is a homophilic adhesion molecule that is expressed in numerous immune cells types and is involved in regulating receptor-mediated signaling in those cells. Alternate splicing results in multiple transcript variants.

Product Info

| | |
|----------------------------|--|
| Amount : | 100 µg |
| Purification : | Purified from cell culture supernatant by affinity chromatography |
| Content : | Not Sterile |
| Storage condition : | Store at -20°C for 12 months (Avoid repeated freezing and thawing) |

Application Note

FACS 1/100

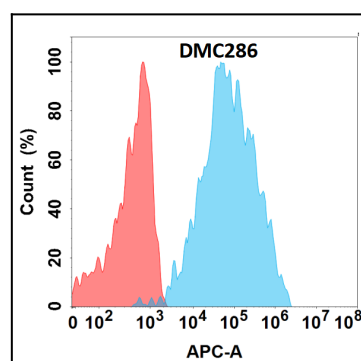


Figure 1. Flow cytometry analysis with Anti-SLAMF5 (DMC286) on Expi293 cells transfected with human SLAMF5 (Blue histogram) or Expi293 transfected with irrelevant protein (Red histogram).