

12-9226: Anti-SELPLG antibody(DMC283), IgG1 Chimeric mAb

Clonality :	Monoclonal
Clone Name :	DMC283
Application :	FACS
Reactivity :	Human
Alternative Name :	PSGL-1,PSGL1,CD162,SELPLG,Selectin P ligand

Description

This gene encodes a glycoprotein that functions as a high affinity counter-receptor for the cell adhesion molecules P-, E- and L- selectin expressed on myeloid cells and stimulated T lymphocytes. As such, this protein plays a critical role in leukocyte trafficking during inflammation by tethering of leukocytes to activated platelets or endothelia expressing selectins. This protein requires two post-translational modifications, tyrosine sulfation and the addition of the sialyl Lewis x tetrasaccharide (sLex) to its O-linked glycans, for its high-affinity binding activity. Aberrant expression of this gene and polymorphisms in this gene are associated with defects in the innate and adaptive immune response. Alternate splicing results in multiple transcript variants.

Product Info

Amount :	100 µg
Purification :	Purified from cell culture supernatant by affinity chromatography
Content :	Not Sterile
Storage condition :	Store at -20°C for 12 months (Avoid repeated freezing and thawing)

Application Note

FACS 1/100

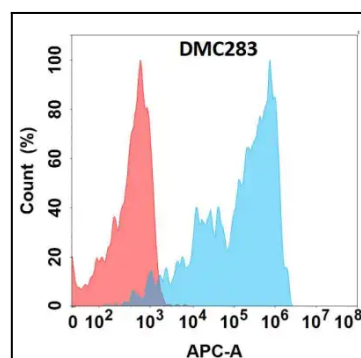


Figure 1. Flow cytometry analysis with Anti-CD162 (DMC283) on Expi293 cells transfected with human CD162 (Blue histogram) or Expi293 transfected with irrelevant protein (Red histogram).