

## 12-9225: Anti-IL11RA antibody(DMC282), IgG1 Chimeric mAb

<b>Clonality :</b>	Monoclonal
<b>Clone Name :</b>	DMC282
<b>Application :</b>	FACS
<b>Reactivity :</b>	Human
<b>Alternative Name :</b>	IL-11 R alpha,IL-11 RA,IL11RA,Interleukin-11 receptor subunit alpha,IL-11 receptor subunit alpha,IL-11R subunit alpha,IL-11R-alpha

### Description

Interleukin 11 is a stromal cell-derived cytokine that belongs to a family of pleiotropic and redundant cytokines that use the gp130 transducing subunit in their high affinity receptors. This gene encodes the IL-11 receptor, which is a member of the hematopoietic cytokine receptor family. This particular receptor is very similar to ciliary neurotrophic factor, since both contain an extracellular region with a 2-domain structure composed of an immunoglobulin-like domain and a cytokine receptor-like domain. Multiple alternatively spliced transcript variants have been found for this gene.

### Product Info

<b>Amount :</b>	100 µg
<b>Purification :</b>	Purified from cell culture supernatant by affinity chromatography
<b>Content :</b>	Not Sterile
<b>Storage condition :</b>	Store at -20°C for 12 months (Avoid repeated freezing and thawing)

### Application Note

FACS 1/100

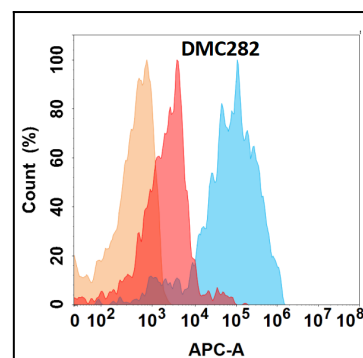


Figure 1. IL11RA protein is highly expressed on the surface of Expi293 cell membrane. Flow cytometry analysis with Anti-IL11RA (DMC282) on Expi293 cells transfected with human IL11RA (Blue histogram) or Expi293 transfected with irrelevant protein (Red histogram), and Isotype antibody on Expi293 transfected with irrelevant protein (Orange histogram).