

12-9224: Anti-AFP antibody(DMC281), IgG1 Chimeric mAb

Clonality : Monoclonal
Clone Name : DMC281
Application : FACS
Reactivity : Human
Alternative Name : AFPD, FETA, HPAFP

Description

This gene encodes alpha-fetoprotein, a major plasma protein produced by the yolk sac and the liver during fetal life. Alpha-fetoprotein expression in adults is often associated with hepatocarcinoma and with teratoma, and has prognostic value for managing advanced gastric cancer. However, hereditary persistence of alpha-fetoprotein may also be found in individuals with no obvious pathology. The protein is thought to be the fetal counterpart of serum albumin, and the alpha-fetoprotein and albumin genes are present in tandem in the same transcriptional orientation on chromosome 4. Alpha-fetoprotein is found in monomeric as well as dimeric and trimeric forms, and binds copper, nickel, fatty acids and bilirubin. The level of alpha-fetoprotein in amniotic fluid is used to measure renal loss of protein to screen for spina bifida and anencephaly.

Product Info

Amount : 100 µg
Purification : Purified from cell culture supernatant by affinity chromatography
Content : Not Sterile
Storage condition : Store at -20°C for 12 months (Avoid repeated freezing and thawing)

Application Note

FACS 1/100

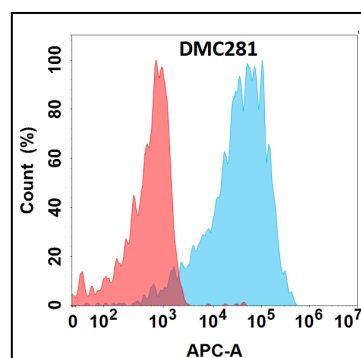


Figure 1. Flow cytometry analysis with Anti-AFP (DMC281) on Expi293 cells transfected with human AFP (Blue histogram) or Expi293 transfected with irrelevant protein (Red histogram).