

## 12-9223: Anti-CD21 antibody(DMC280), IgG1 Chimeric mAb

**Clonality :** Monoclonal  
**Clone Name :** DMC280  
**Application :** FACS  
**Reactivity :** Human  
**Alternative Name :** C3DR, CD21, CR, CVID7, SLEB9

### Description

This gene encodes a membrane protein, which functions as a receptor for Epstein-Barr virus (EBV) binding on B and T lymphocytes. Genetic variations in this gene are associated with susceptibility to systemic lupus erythematosus type 9 (SLEB9). Alternatively spliced transcript variants encoding different isoforms have been found for this gene.

### Product Info

**Amount :** 100 µg  
**Purification :** Purified from cell culture supernatant by affinity chromatography  
**Content :** Not Sterile  
**Storage condition :** Store at -20°C for 12 months (Avoid repeated freezing and thawing)

### Application Note

FACS 1/100

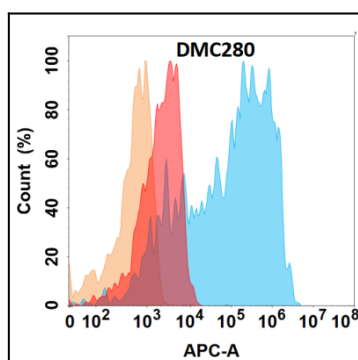


Figure 1. Flow cytometry analysis with Anti-CD21 (DMC280) on Expi293 cells transfected with human CD21 (Blue histogram) or Expi293 transfected with irrelevant protein (Red histogram), and Isotype antibody on Expi293 transfected with irrelevant protein (Orange histogram).

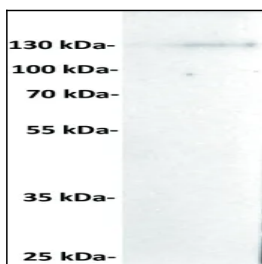


Figure 2. Anti-CD21 antibody at 1/1000 dilution Lane : RAJI, whole cell lysate Secondary : Goat Anti-Rabbit IgG H&L (HRP) at 1/5000 dilution Predicted band size: 113 kDa Observed band size: 150 kDa

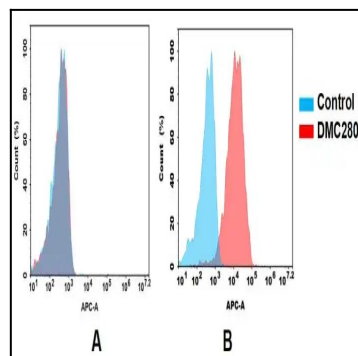


Figure 3. Flow cytometry analysis of antigen binding of anti-human CD21 mAb. (A) Anti-human CD21 mAb does not bind to Jurkat cells that do not express CD21. (B) A clear peak shift of anti-human CD21 mAb was seen compared to the control when incubated with CD21-expressing Raji cells, indicating strong binding of anti-human CD21 mAb to CD21. Antibodies were incubated at 10 <sup>1</sup>/<sub>4</sub>g/mL.