

## 12-9205: Anti-IFNAR1 antibody(DMC221), IgG1 Chimeric mAb

|                           |  |
|---------------------------|--|
| <b>Clonality :</b>        | Monoclonal   |
| <b>Clone Name :</b>       | DMC221   |
| <b>Application :</b>      | ELISA,FACS   |
| <b>Reactivity :</b>       | Human  |
| <b>Alternative Name :</b> | Interferon alpha/beta receptor 1?IFN-R-1?IFN-alpha/beta receptor 1?CRF2-1?Type I interferon receptor 1 |

### Description

The protein encoded by this gene is a type I membrane protein that forms one of the two chains of a receptor for interferons alpha and beta. Binding and activation of the receptor stimulates Janus protein kinases, which in turn phosphorylate several proteins, including STAT1 and STAT2. The protein belongs to the type II cytokine receptor family and functions as an antiviral factor.

### Product Info

|                            |  |
|----------------------------|--|
| <b>Amount :</b>            | 100 µg   |
| <b>Purification :</b>      | Purified from cell culture supernatant by affinity chromatography  |
| <b>Content :</b>           | Not Sterile  |
| <b>Storage condition :</b> | Store at -20°C for 12 months (Avoid repeated freezing and thawing) |

### Application Note

ELISA 1/5000-10000;FACS 1/100

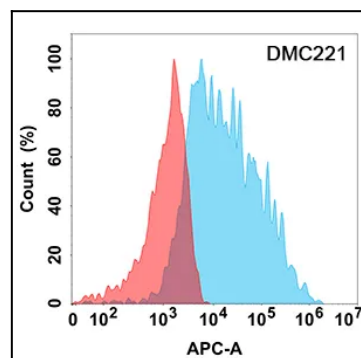


Figure 1. Flow cytometry analysis with Anti-IFNAR1 (DMC221) on Expi293 cells transfected with human IFNAR1 (Blue histogram) or Expi293 transfected with irrelevant protein (Red histogram).