

12-9204: Anti-FCRL5 antibody(DMC220), IgG1 Chimeric mAb

Clonality :	Monoclonal
Clone Name :	DMC220
Application :	ELISA,FACS
Reactivity :	Human
Alternative Name :	BXMAS1; CD307; CD307e; FCRH5; IRTA2; PRO820

Description

This gene encodes a member of the immunoglobulin receptor superfamily and the Fc-receptor like family. This gene and several other Fc receptor-like gene members are clustered on the long arm of chromosome 1. The encoded protein is a single-pass type I membrane protein and contains 8 immunoglobulin-like C2-type domains. This gene is implicated in B cell development and lymphomagenesis. Alternatively spliced transcript variants encoding different isoforms have been identified.

Product Info

Amount :	100 µg
Purification :	Purified from cell culture supernatant by affinity chromatography
Content :	Not Sterile
Storage condition :	Store at -20°C for 12 months (Avoid repeated freezing and thawing)

Application Note

ELISA 1/5000-10000;FACS 1/100

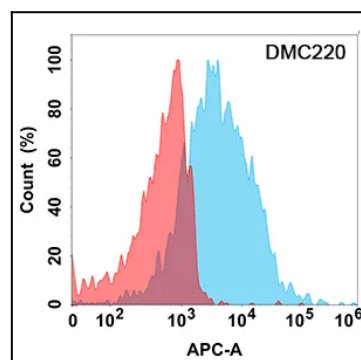


Figure 1. Flow cytometry analysis with Anti-FCRL5 (DMC220) on Expi293 cells transfected with human FCRL5 (Blue histogram) or Expi293 transfected with irrelevant protein (Red histogram).