

## 12-9201: Anti-CD24 antibody(DMC213), IgG1 Chimeric mAb

<b>Clonality :</b>	Monoclonal
<b>Clone Name :</b>	DMC213
<b>Application :</b>	ELISA,FACS
<b>Reactivity :</b>	Human
<b>Alternative Name :</b>	CD24A

### Description

This gene encodes a sialoglycoprotein that is expressed on mature granulocytes and B cells and modulates growth and differentiation signals to these cells. The precursor protein is cleaved to a short 32 amino acid mature peptide which is anchored via a glycosyl phosphatidylinositol (GPI) link to the cell surface. This gene was missing from previous genome assemblies, but is properly located on chromosome 6. Non-transcribed pseudogenes have been designated on chromosomes 1, 15, 20, and Y. Alternative splicing results in multiple transcript variants.

### Product Info

<b>Amount :</b>	100 µg
<b>Purification :</b>	Purified from cell culture supernatant by affinity chromatography
<b>Content :</b>	Not Sterile
<b>Storage condition :</b>	Store at -20°C for 12 months (Avoid repeated freezing and thawing)

### Application Note

ELISA 1/5000-10000;Flow Cyt 1/100

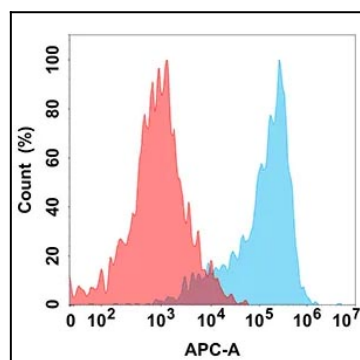


Figure 1. Flow cytometry analysis with Anti-CD24 (DMC213) on Expi293 cells transfected with human CD24 (Blue histogram) or Expi293 transfected with irrelevant protein (Red histogram).

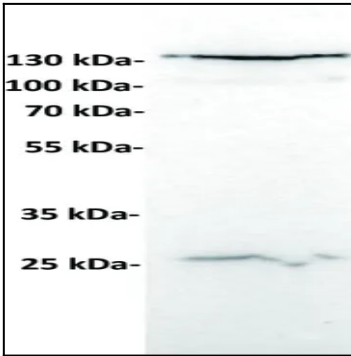


Figure 2. Anti-CD24 antibody at 1/1000 dilution Lane : Huh7, whole cell lysate  
 Secondary : Goat Anti-Rabbit IgG H&L (HRP) at 1/5000 dilution Predicted band size:  
 61 kDa Observed band size: 135 kDa

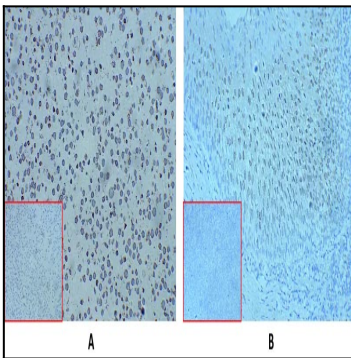


Figure 3. A. At 10µg/ml staining CD24 in K562-CD24 cells by IHC; B. At 10µg/ml staining CD24 in human tonsil tissue by IHC.

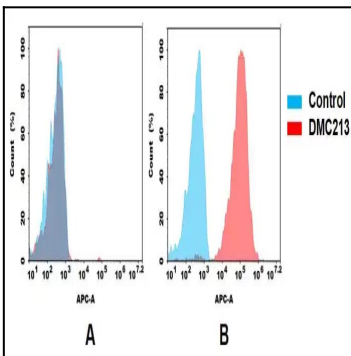


Figure 4. Flow cytometry analysis of antigen binding of anti-human CD24 mAb. (A) It does not bind to Jurkat cells that do not express CD24. (B) A clear peak shift was seen compared to the control when incubated with CD24-expressing MCF-7 cells, indicating strong binding to CD24. Antibodies were incubated at 10 µg/mL.