

## 12-9192: Anti-M-CSF(lacnotuzumab biosimilar) mAb

**Clonality :** Monoclonal  
**Application :** ELISA  
**Reactivity :** Human  
**Alternative Name :** CSF-1, MCSF  
**Isotype :** IgG1

### Description

Research grade biosimilar. Not for use in therapeutic or diagnostic procedures for humans or animals.

### Product Info

**Amount :** 50 µg / 100 µg  
**Purification :** Purified from cell culture supernatant by affinity chromatography  
**Content :** Not Sterile  
**Storage condition :** Store at -20°C to -80°C for 12 months in lyophilized form. After reconstitution, if not intended for use within a month, aliquot and store at -80°C (Avoid repeated freezing and thawing). Lyophilized proteins are shipped at ambient temperature.

### Application Note

ELISA 1:5000-10000, FACS 1:100

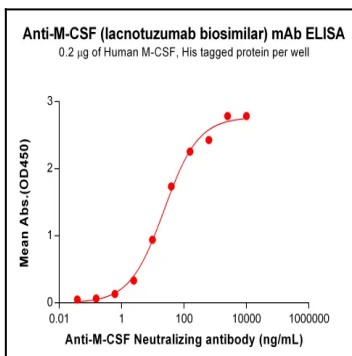


Figure 1. ELISA plate pre-coated by 2 µg/mL (100 µL/well) Human M-CSF Protein, His Tag can bind Anti-M-CSF Neutralizing antibody in a linear range of 2.44-156.25 ng/mL.

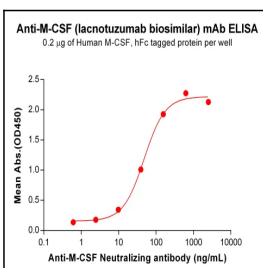


Figure 2. ELISA plate pre-coated by 2 µg/mL (100 µL/well) Human M-CSF Protein, hFc Tag can bind Anti-M-CSF Neutralizing antibody in a linear range of 9.77-156.25 ng/mL. In order to specifically detect Anti-M-CSF Neutralizing antibody, mouse anti-human Fab-specific antibody was used as detection antibody.

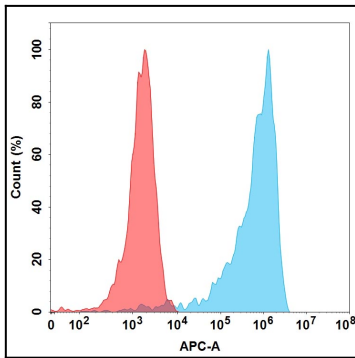


Figure 3. Flow cytometry analysis with 1  $\mu$ g/mL Anti-M-CSF (lacnotuzumab biosimilar) mAb on Expi293 cells transfected with Human M-CSF protein (Blue histogram) or Expi293 transfected with irrelevant protein (Red histogram).