

## 12-9188: Anti-CEACAM6(tinurilimab biosimilar) mAb

<b>Clonality :</b>	Monoclonal
<b>Application :</b>	ELISA
<b>Reactivity :</b>	Human
<b>Alternative Name :</b>	CD66c, CEAL, NCA
<b>Isotype :</b>	IgG2

### Description

Research grade biosimilar. Not for use in therapeutic or diagnostic procedures for humans or animals.

### Product Info

<b>Amount :</b>	50µg / 100 µg
<b>Purification :</b>	Purified from cell culture supernatant by affinity chromatography
<b>Content :</b>	Not Sterile
<b>Storage condition :</b>	Store at -20°C to -80°C for 12 months in lyophilized form. After reconstitution, if not intended for use within a month, aliquot and store at -80°C (Avoid repeated freezing and thawing).Lyophilized proteins are shipped at ambient temperature.

### Application Note

ELISA 1:5000-10000, FACS 1:100

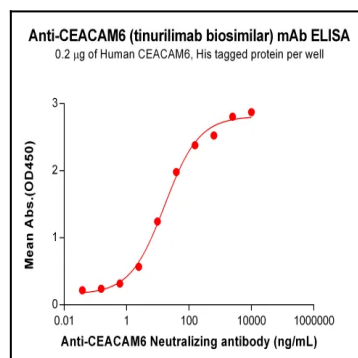


Figure 1. ELISA plate pre-coated by 2 µg/mL (100 µL/well) Human CEACAM6 Protein, His Tag can bind Anti-CEACAM6 Neutralizing antibody in a linear range of 0.61-156.25 ng/mL.

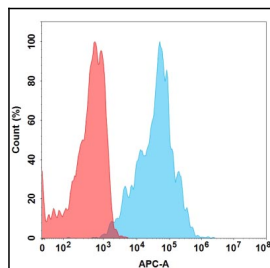


Figure 2. Flow cytometry analysis with 1 µg/mL Anti-CEACAM6 (tinurilimab biosimilar) mAb on Expi293 cells transfected with Human CEACAM6 protein (Blue histogram) or Expi293 transfected with irrelevant protein (Red histogram).