

12-9181: Anti-GDF15(ponsegromab biosimilar) mAb

Clonality :	Monoclonal
Application :	FACS
Reactivity :	Human
Alternative Name :	GDF-15, MIC-1, MIC1, NAG-1, PDF, PLAB, PTGFB
Isotype :	IgG1

Description

Research grade biosimilar. Not for use in therapeutic or diagnostic procedures for humans or animals.

Product Info

Amount :	50µg / 100 µg
Purification :	Purified from cell culture supernatant by affinity chromatography
Content :	Not Sterile
Storage condition :	Store at -20°C to -80°C for 12 months in lyophilized form. After reconstitution, if not intended for use within a month, aliquot and store at -80°C (Avoid repeated freezing and thawing).Lyophilized proteins are shipped at ambient temperature.

Application Note

FACS 1:100

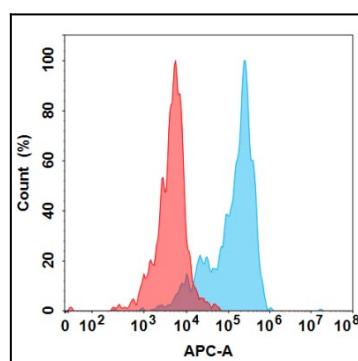


Figure 1. Flow cytometry analysis under cell membrane permeable condition with 1 µg/mL Anti-GDF15 (ponsegromab biosimilar) mAb on Expi293 cells transfected with Human GDF15 protein (Blue histogram) or Expi293 transfected with irrelevant protein (Red histogram).

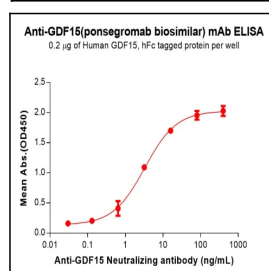


Figure 2. ELISA plate pre-coated by 2 µg/mL (100 µL/well) Human GDF15 Protein, hFc Tag can bind Anti-GDF15(ponsegromab biosimilar) mAb in a linear range of 0.64-80 ng/mL. In order to specifically detect Anti-GDF15(ponsegromab biosimilar) mAb, mouse anti-human Fab-specific antibody was used as detection antibody.