

10-10060: Anti-Monkeypox A29 Antibody (Clone: ABM6A9.1B3)

| | |
|--------------------------------|--|
| Clonality : | Monoclonal |
| Clone Name : | ABM6A9.1B3 |
| Application : | ELISA,WB |
| Format : | Purified |
| Immunogen Information : | A partial length recombinant Monkey Pox A29 protein was used as the immunogen for this antibody. |

Product Info

| | |
|----------------------------|---|
| Amount : | 25 µg / 100 µg |
| Purification : | Protein G Chromatography |
| Content : | 25 µg in 50 µl/100 µg in 200 µl PBS containing 0.05% BSA and 0.05% sodium azide. Sodium azide is highly toxic. |
| Storage condition : | Store the antibody at 4°C, stable for 6 months. For long-term storage, store at -20°C. Avoid repeated freeze and thaw cycles. |

Application Note

Recommended dilutions: ELISA: 0.5-2 µg/ml, WB:0.1-0.5 µg/ml. However, this need to be optimized based on the research applications.

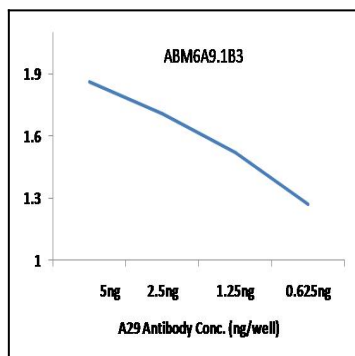


Figure-1: An indirect ELISA is carried out by coating A29 antigen in serial dilution from 5 ng/well to 0.625 ng/well and purified Anti-A29 monoclonal antibodies ABM6A9.1B3 was added at 100ng/well. Peroxidase conjugated Goat-Anti mouse antibody was used at 1:5000 dilution.

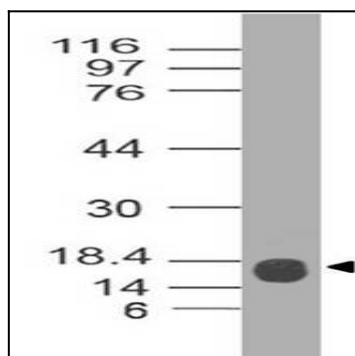


Figure-2: Western Blot analysis of Monkey Pox A29 Antibody: Anti-Monkey Pox A29 Antibody (Clone: ABM6A9.1B3) was used at 0.5 µg/ml on Monkey Pox A29 Recombinant protein.