

11-2030: Anti CRP Polyclonal Antibody

Clonality :	Polyclonal
Application :	ELISA,WB
Gene :	CRP
Gene ID :	1401
Uniprot ID :	P02741
Format :	Purified
Alternative Name :	PTX1
Isotype :	Rabbit IgG
Immunogen Information :	Native antigen of CRP was used as the immunogen for this antibody

Product Info

Amount :	25 $\hat{1}$ / ₄ g / 100 μ g
Purification :	Protein A Chromatography
Content :	25 μ g in 50 μ l/100 μ g in 200 μ l PBS containing 0.05% BSA and 0.05% sodium azide. Sodium azide is highly toxic.
Storage condition :	Store the antibody at 4°C, stable for 6 months. For long-term storage, store at -20°C. Avoid repeated freeze and thaw cycles.

Application Note

Recommended dilutions: WB: 0.25-0.5 μ g/ml. However, this need to be optimized based on the research applications.

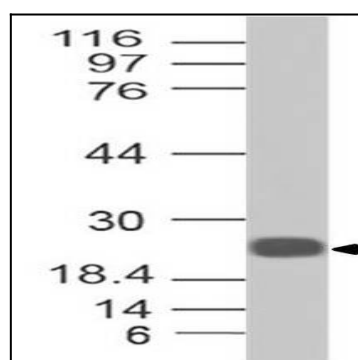


Figure-1: Western Blot analysis of CRP. Anti-CRP antibody (11-2030) was used at 0.25 μ g/ml on Recombinant protein.