

11-4038: Polyclonal Antibody to ID2

Clonality :	Polyclonal
Application :	WB
Reactivity :	Human
Gene :	ID2
Uniprot ID :	Q02363
Format :	Purified
Alternative Name :	GIG8, ID2A, ID2H
Isotype :	Rabbit IgG
Immunogen Information :	A partial length recombinant CADM1 protein (amino acids 50-250) was used as the immunogen for this antibody.

Description

ID (inhibitor of DNA binding) HLH proteins lack a basic DNA-binding domain but are able to form heterodimers with other HLH proteins, thereby inhibiting DNA binding. ID-2 may be an inhibitor of tissue-specific gene expression.

Product Info

Amount :	100 µg
Purification :	Protein A Chromatography
Content :	25 µg in 50 µl/100 µg in 200 µl PBS containing 0.05% BSA and 0.05% sodium azide. Sodium azide is highly toxic.
Storage condition :	Store the antibody at 4°C, stable for 6 months. For long-term storage, store at -20°C. Avoid repeated freeze and thaw cycles.

Application Note

Western blot analysis: 2-4 µg/ml

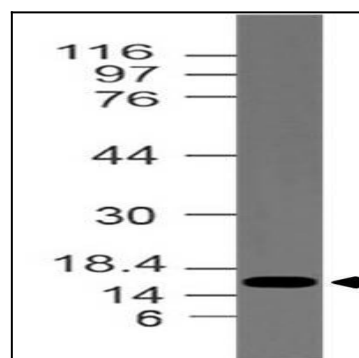


Fig-1: Western blot analysis of ID2. Anti-ID2 antibody (11-4038) was used at 2 µg/ml on Human Spleen lysate.