

12-9136: Anti-SELP (crizanlizumab biosimilar) mAb

Clonality : Monoclonal
Reactivity : Human
Alternative Name : P-Selectin,CD62P,SELP,GMP-140
Isotype : IgG2

Description

Research grade biosimilar. Not for use in therapeutic or diagnostic procedures for humans or animals.
Specificity: Human

Product Info

Amount : 50 µg / 100 µg
Purification : Purified from cell culture supernatant by affinity chromatography
Buffer :Lyophilized from sterile PBS, pH 7.4. Normally 5 % - 8% trehalose is added as protectants before lyophilization.
Content : Reconstituent :Reconstitute with deionized water
Preservative :0.1% Procline 300
Not Sterile
Storage condition : Store at -20°C (Avoid repeated freezing and thawing)

Application Note

Flow Cyt 1:100

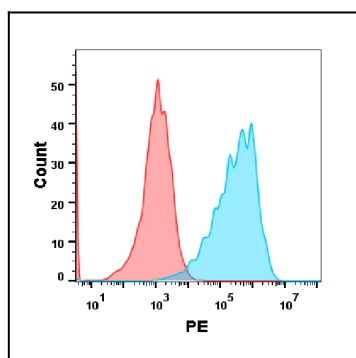


Figure 1. HEK293 cell line transfected with irrelevant protein (red histogram) and human SELP protein (blue histogram) were surface stained with Anti-SELP(crizanlizumab biosimilar) mAb 1µg/ml followed by PE-conjugated Goat anti-Human IgG secondary antibody.