

## 12-9134: Anti-CLDN18.2 (zolbetuximab biosimilar)

**Clonality :** Monoclonal  
**Reactivity :** Human  
**Uniprot ID :** P56856  
**Alternative Name :** SFTA5; SFTPJ  
**Isotype :** IgG1

### Description

Research grade biosimilar. Not for use in therapeutic or diagnostic procedures for humans or animals.  
Specificity: Human

### Product Info

**Amount :** 50 µg / 100 µg  
**Purification :** Purified from cell culture supernatant by affinity chromatography  
Buffer :Lyophilized from sterile PBS, pH 7.4. Normally 5 % - 8% trehalose is added as protectants before lyophilization.  
**Content :** Reconstituent :Reconstitute with deionized water  
Preservative :0.1% Procline 300  
Not Sterile  
**Storage condition :** Store at -20°C (Avoid repeated freezing and thawing)

### Application Note

Flow Cytometry: 1-2 ug per  $1 \times 10^6$  cells.

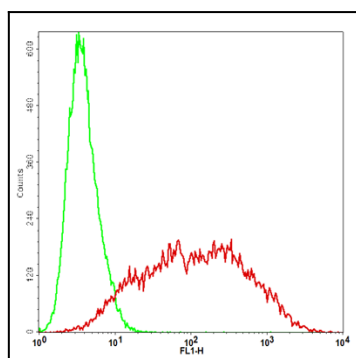


Figure 1. Flow cytometry analysis of Anti-CLDN18.2 mAb (zolbetuximab) tested on CHO-K1 cells transfected with human CLDN18.2 (Red) or parental CHO-K1 cells (Green) at 1 ug per  $1 \times 10^6$  cells.