

12-9132: Anti-ROR1 (zilovertamab biosimilar) mAb

Clonality :	Monoclonal
Application :	ELISA
Reactivity :	Human
Alternative Name :	ROR1,NTRKR1
Isotype :	IgG1

Description

Research grade biosimilar. Not for use in therapeutic or diagnostic procedures for humans or animals.
Specificity: Human

Product Info

Amount :	50 µg / 100 µg
Purification :	Purified from cell culture supernatant by affinity chromatography Buffer :Lyophilized from sterile PBS, pH 7.4. Normally 5 % - 8% trehalose is added as protectants before lyophilization.
Content :	Reconstituent :Reconstitute with deionized water Preservative :0.1% Procline 300 Not Sterile
Storage condition :	Store at -20°C (Avoid repeated freezing and thawing)

Application Note

ELISA 1:5000-10000, Flow Cyt 1:100

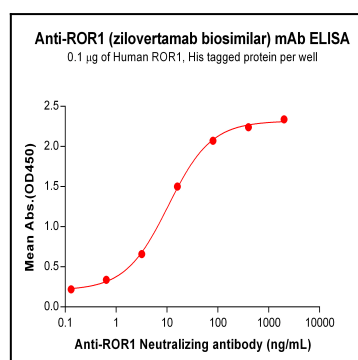


Figure 1. ELISA plate pre-coated by 2 µg/ml (100 µl/well) Human ROR1 (Abeomics 32-17143), His tagged protein can bind Anti-ROR1 Neutralizing antibody (12-9132) in a linear range of 0.64-16 µg/ml.

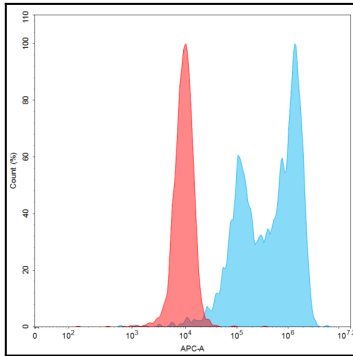


Figure 2. Flow cytometry analysis with Anti-ROR1 (zilovetamab biosimilar) mAb 15 $\mu\text{g}/\text{mL}$ on Expi293 cells transfected with Human ROR1 (Blue histogram) or Expi293 transfected with irrelevant protein (Red histogram).